

MINNICH

HIGH CYCLE GENERATOR OWNER/OPERATOR MANUAL



MINNICH MANUFACTURING

1444 ST RT 42
Mansfield, OH 44903

CONTACT

Phone: (419)-903-0010
Email: sales@minnich-mfg.com

REVISION DATE: 12/03/2020

TABLE OF CONTENTS

Chapter 1-Introduction.....	2
General Warnings.....	3
General Safety.....	4
General Specifications.....	12
Safety Decal Location.....	14
Chapter 2-Parts Manual.....	15
Parts Manual (115V).....	15
Parts Manual (230V).....	16
Motor Parts Sheet.....	17
Generator Wiring Instructions.....	18
General Specifications (GX270).....	19
General Engine Information.....	20
Parts Manual.....	21
Notes.....	35
Warranty.....	36
Parts Ordering Online.....	37

NOTICE

Your new Minnich High Cycle generator was carefully designed and manufactured to give years of dependable service. To keep it running efficiently, read the instructions in this manual thoroughly. It contains detailed descriptions and instructions for the efficient operation and maintenance of your High Cycle Generator. Each section is clearly identified so you can easily find the information that you need. All instructions are recommended procedures only.

NOTICE

If there are any questions regarding the machine or its application which are not covered in this manual or in other literature accompanying this unit, please contact your Minnich Dealer or Minnich Manufacturing at 419-903-0010 or sales@minnich-mfg.com

NOTICE

It is Minnich's policy to constantly strive to improve our products. The information, specifications, and illustrations in this publication are based on the information in effect at the same time as approval for printing and publishing. Minnich therefore reserves the right to make changes in design and improvements whenever it is believed the efficiency of the machine which has been shipped or curing any obligation to incorporate such improvements in any machine which has been shipped or is in service. It is recommended that users contact Minnich or a Minnich Dealer for latest revisions.

⚠ WARNING

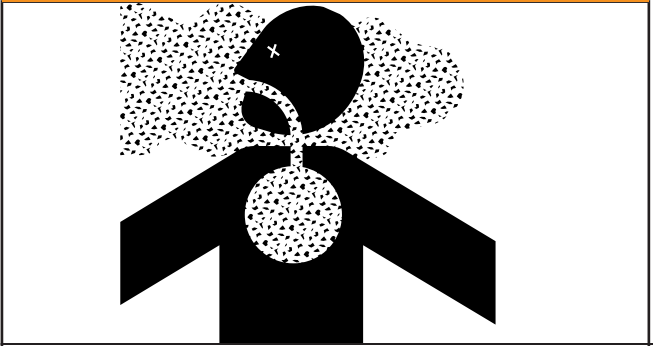
CALIFORNIA PROPOSITION 65

Engine exhaust and some of its constituents, and some dust created by power sanding, sawing, grinding, drilling and other construction activities contains chemicals known to the State of California to cause cancer, birth defects and other reproductive harm. Some examples of these chemicals are:

- Lead from lead-based paints.
- Crystalline silica from bricks.
- Arsenic and chromium from chemically treated lumbar.

Your risk from these exposures varies, depending on how often you do this type of work. To reduce your exposure to these chemicals: ALWAYS work in a well ventilated area, and work with improved safety equipment, such as dust masks that are specifically designed to filter out microscopic particles.

⚠ WARNING



SILICOSIS WARNING

Grinding/cutting/drilling of masonry, concrete, metal and other materials with silica in their composition may give off dust or mist containing crystalline silica.

Silica is a basic components of sand, quarts, brick clay, granite and numerous other minerals and rocks. Repeated and/or substantial inhalation of airborne crystalline silica can cause serious or fatal respiratory disease, including silicosis. In addition, California and some authorities have listed respirable crystalline silica as a substance known to cause cancer. When cutting such materials, always follow the respiratory precautions mentioned above.

⚠ WARNING

RESPIRATORY HAZARDS



Grinding/cutting/drilling of masonry, concrete, metal and fumes containing chemicals known to cause serious or fatal injury or illness, such as respiratory disease, cancer, birth defects or other reproduction harm, if you are unfamiliar with the risks associated with the particular process and/or material being cut or the composition of the tool being used, review the material safety data sheet and/or consult your employer, the material manufacturer/supplier, governmental agencies such as OSHA and NIOSH and other sources on hazardous materials. California and some other authorities, for instance, have published lists of substances known to cause cancer, reproductive toxicity or other harmful effects.

Control dust, mist and fumes at the source where possible. In this regard use good work practices and follow the recommendations of the manufactures of suppliers, OSHA/NIOSH, and occupational and trade associations. Water should be used for dust suppression when wet cutting is feasible. When the hazards from inhalation of dust, mist and fumes cannot be eliminated, the operator and any bystanders should always wear a respirator approved by OSHA/NIOSH for the materials being used.

GENERAL SAFETY

Do not operate or service the equipment before reading the entire manual. Safety precautions should be followed at all times when operating this equipment. Failure to read and understand the safety messages and operating instructions could result in injury to yourself and others.

This operation manual has been developed to provide complete instruction for the safe and efficient operation. Refer to the engine manufactures instructions for data relative to its safe operation. **Before using, ensure that the operating individual has read and understood all instructions in the manual.** The surrounding environment and you, could be damaged if you do not follow instructions.

SAFETY MESSAGES

The four safety messages shown below will inform you about potential hazards that could injure you or others. The safety messages specifically address the level of exposure to the operator and are preceded by one of four words: **DANGER, WARNING, CAUTION** or **NOTICE**.

DANGER

Indicates a hazardous situation which, if not avoided, **WILL** result in **DEATH** or **SERIOUS INJURY**

WARNING

Indicates a hazardous situation which, if not avoided, **COULD** result in **DEATH** or **SERIOUS INJURY**

CAUTION




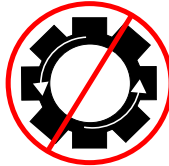

Indicates a hazardous situation which, if not avoided, **COULD** result in **MINOR** or **MODERATE INJURY**

NOTICE

Addresses practices not related to personal injury

SAFETY SYMBOLS

Potential hazards associated with the operation of this equipment will be referenced with hazards symbols which may appear throughout this manual in conjunction with safety messages.

SYMBOL	SAFETY HAZARD
	Lethal exhaust gas hazards
	Explosive fuel hazards
	Burn hazard
	Overspeed hazards
	Electrocution/Shock Hazard

WARNING

DO NOT USE TOOL IF IT IS IN NEED OF SERVICE!

GENERAL SAFETY

⚠ CAUTION

Δ NEVER operate this equipment without proper protective clothing, shatter proof glasses, respirator protection, hearing protection, steel-toes boots and other protective devices required by the job or city and state regulations.



Δ Never operate this equipment when not feeling well due to fatigue, illness or when under medication.



Δ NEVER operate this equipment under the influence of drugs or alcohol.



Δ ALWAYS check the equipment for loosened threads or bolts before starting.

Δ NEVER operate around corrosive chemicals or water containing toxic substances. These fluids could create serious health and environmental hazards. Contact local authorities for assistance.

Δ DO NOT use the equipment for any purpose other than its intended purpose or applications.

NOTICE

Δ This equipment should only be operated by trained and qualified personnel 18 years of age and older.

Δ This equipment is for industrial use only. Whenever necessary, replace nameplate, operation and safety decals when they become difficult to read.

Δ Manufacturer does not assume responsibility for any accident due to equipment modifications. Unauthorized equipment modifications will void all warranties. Any modification which it could lead to change in the original characteristics of the machine should be made only by the manufacturer who shall confirm that the machine is in comfortability

with appropriate safety regulations.

Δ Never use accessories or attachments that are not recommended by Minnich for the equipment. Damage to the equipment and/or injury to user may result.

Δ ALWAYS know the location of the nearest fire extinguisher.



Δ ALWAYS know the location of the nearest first aid kit.



Δ ALWAYS know the location of the nearest phone or keep a phone on the job site. Also, know the phone numbers of the nearest ambulance, doctor and fire department. This information will be invaluable in the case of an emergency.



⚠ DANGER

Δ NEVER operate the equipment in an explosive atmosphere, near combustible materials, or near flammable or low flash point fluids. An explosion or fire could result causing severe bodily harm or even death.



⚠ WARNING

Δ NEVER disconnect any emergency or safety devices. These devices are intended for operator safety. Disconnection of these devices can cause severe injury, bodily harm or even death. Disconnection of any of these will void all warranties.

Δ NEVER operate equipment with the covers or guards removed. Keep fingers, hands, hair and clothing away from all moving parts to prevent injury. Wear clothing that will not likely become caught in the equipment or snag on any moving parts.

⚠ CAUTION

Δ ALWAYS be sure the operator is familiar with the proper safety precautions and operating techniques before using.

Δ NEVER leave the machine unattended. Turn off when unattended

GENERAL SAFETY

- △ DO NOT expose vibrator to rain.
- △ DO NOT use vibrator motor in damp or wet locations without proper electrical circuits.
- △ DO NOT immerse the motor part in concrete.
- △ ALWAYS keep clear of rotating or moving parts while operating.
- △ NEVER leave the machine unattended while running
- △ ALWAYS disconnect the motor from the power source when not in use, before servicing, and when changing flexible shafting and vibrator heads.

- △ Allow the machine to cool before servicing. Contact with hot components can cause serious burns.



- △ Before Each use, ALWAYS check the motor to make certain that there are no damaged parts and that all parts function properly. If any damage or malfunctioning parts are found, have them repaired or replaced by an authorized service facility.
- △ When operating a power tool outside, use Outdoor extension cords marked "W-A" or "W". These cords are rated for outdoor use And reduce the risk of electric shock.
- △ DO NOT abuse the cord. Never use the cord to carry the tools or pull the plug from an outlet. Keep cord away from heat, oil, sharp edges, or moving parts. Replace damaged cords immediately. Damaged cords increase the risk of electric shock.

NOTICE

- △ ALWAYS secure forms. Make sure the form work is well made and braced to withstand the stresses made by vibration.
- △ ALWAYS keep vibrator motor clean for better and safer operation.
- △ ALWAYS store equipment properly when it is not being used. Equipment should be stored in a clean, dry location out of reach of children and unauthorized personnel.
- △ Use only factory authorized replacement parts.
- △ Store idle vibrator motor. When not in use, motor should be stored in a dry, safe storage area.

ELECTRICAL SAFETY

⚠ CAUTION

- △ Power tools must match the outlet. NEVER modify the plug in any way. DO NOT use the adapter plugs with earthed (grounded) power tools. Unmodified plugs and matching outlets will reduce risk of electric shock.
- △ Avoid contact with earthed or grounded surfaces such as pipes, radiators ranges and refrigerators. There is an increase risk of electric shock if your body is earthed or grounded.
- △ **DO NOT** expose power tools to rain or wet conditions. Water entering a power tool will increase risk of electric shock.
- △ **DO NOT** abuse power cord. **NEVER** use the cord for carrying, pulling or unplugging the power tool. Keep cord away from heat, oil sharp edges or moving parts. Damaged or entangled cords increase the risk of electric shock.
- △ When operating a power tool outside use an extension cord suitable for outdoor use. Use of a cord suitable for outdoor use reduces the risk of electric shock.
- △ This unit is double-insulated. The double insulation between the electric-conducting part and the outside frame makes grounding unnecessary. However, if parts are replaced with wrong parts or assembled incorrectly, the machine may become unsafe to operate. Use only Minnich Recommended replacement parts.
- △ When applicable, use a protection wiring device such as a Ground Fault Circuit Interrupter, for the protection of personnel.
- △ Operate electric motor only at the specific voltage indicated on the nameplate.
- △ **DO NOT** spray water onto electric motor.
- △ **DO NOT** yank the cord to disconnect it from the receptacle. Grasp the plug itself to disconnect it.
- △ **ALWAYS** make sure the ON/OFF switch is in the OFF position when not in use, and before inserting the power plug into an AC replacement.
- △ Before plugging the motor into a power source, **ALWAYS** remove any wrenches or other tools from the motor, shaft, and head that were used for assembly.

GENERAL SAFETY

POWER CORD/CABLE SAFETY

⚠ DANGER

△ ALWAYS use a grounded 3-wire extension cord that has a 3-prong grounding plug, and a 3-pole receptacle that accepts the plug on the concrete vibrator motor. **DO NOT REMOVE THE GROUNDING PIN FROM THE PLUG!**

△ NEVER let power cords or cables lay in water.

△ NEVER use damaged or worn cables or cords when connecting equipment to generator. Inspect for cuts in the insulation.

△ NEVER grab or touch a live power cord or cable with wet hands. The possibility exists of electrical shock, electrocution or death



△ Make sure power cables are securely connected. Incorrect connections may cause electrical shock and damage to the machine.

⚠ CAUTION

△ Ensure that cables and cords will not be tripped over.

NOTICE

- △ ALWAYS make certain that proper power or extension cord has been selected for the job.
- △ Use only extension cords that are intended for outdoor use and so marked
- △ Use only the gauge wire and length of cord recommended for the motor size. If in doubt, go to the next heavier gauge. (The smaller the gauge the heavier the cord.)

POWER TOOL USE AND CARE

- △ DO NOT use the vibrator if the switch does not turn it on and off. Any vibrator that cannot be controlled with the switch is dangerous and must be repaired.
- △ Disconnect the plug from the power cord source before making any adjustments, changing accessories, or storing vibrators. Such preventative safety measures reduce the risk of starting the vibrators accidentally.
- △ Maintain power tools. Check for misalignment or binding of moving parts, breakage of parts and any other condition that may effect the power tools operation. If damaged, have the vibrator tool repaired before use.

HIGH CYCLE GENERATOR MANUAL

SERVICE

△ Have your vibrators serviced by a qualified repair person using Minnich replacement parts. This will ensure the safety of the vibrator/generator is maintained.

ENVIRONMENTAL SAFETY/DECOMMISSIONING

NOTICE

△ DO NOT pour waste or oil directly on to the ground, down a drain or into any water source.

△ Contact you country department of Public Works or recycling agency in your area and arrange for proper disposal of any electrical components, waste or oil associated with this equipment.



ELECTRICAL SAFETY

⚠ DANGER

- △ Turn generator **OFF** before performing maintenance on the generator or making contact with the output receptables.
- △ **NEVER** insert any objects into the output receptables during operation. This is extremely dangerous. The possibility exists of electrical shock, Electrocution or death.

GROUNDING SAFETY

⚠ DANGER

- △ ALWAYS make sure that electrical circuits are properly grounded to a suitable earth ground (ground rod) per the National Electrical Code (NEC) and local codes before operating generator. Serve injury or death by electrocution can result from operating an ungrounded generator.
- △ NEVER use gas piping as an electrical ground.

⚠ DANGER

Electric shock can occur when vibrators are used. Pay close attention to handling when operating vibrators and always use rubber boots and gloves to insulate the body from a short circuit.



GENERAL SAFETY

- △ Store fuel in appropriate containers, in well-ventilated areas and away from sparks and flames.
- △ NEVER use fuel as a cleaning agent.
- △ DO NOT smoke around or near the equipment. Fire or explosion could result from fuel vapors or if fuel is spilled on hot engine.



TRANSPORTING

- △ ALWAYS shut down engine before transporting.
- △ Tighten fuel cap securely and close fuel cock to prevent fuel from spilling.
- △ ALWAYS use proper lifting techniques when using or moving the machine assembly.

NOTICE

Decommissioning is a controlled process used to safely retire a piece of equipment that is no longer serviceable. If the equipment poses an unacceptable and unreparable safety risk due to wear or damage or is no longer cost effective to maintain (beyond life-cycle reliability) and is to be decommissioned (demolition and dismantlement), be sure to follow rules below.

- △ ALWAYS observe all applicable compulsory regulations relevant to environmental protection, especially fuel storage, the handling of hazardous substances, and the wearing of protective clothing and equipment. Instruct the user as a necessary, or, as the user, request this information and training.
- △ ALWAYS Dispose of hazardous waste properly. Examples of potentially hazardous waste include used motor oil, fuel, and fuel filters.
- △ DO NOT use food or plastic containers to dispose hazardous waste.
- △ DO NOT pour waste or oil directly onto the ground, down or drain or into any waste source.

⚠ WARNING

DO NOT USE TOOL IF IT IS IN NEED OF SERVICE!

- △ Contact your country's Department of Public Works or recycling agency in your area and arrange for proper disposal of any electrical components, waste or oil associated with this equipment.



- △ When the life cycle of this equipment is over, remove battery (if equip) and bring to appropriate facility for lead reclamation. Use safety precautions when handling batteries that contain sulfuric acid.
- △ When the life cycle of this equipment is over, it is recommended that the unit frame and all other metal parts be sent to a recycling center.

Metal recycling involves the collection of metal from discarded products and its transformation into raw materials to use in many Manufacturing a new product.

Recyclers and manufactures alike promote the process of recycling center promotes energy cost savings.

EMISSIONS INFORMATION

NOTICE

IF APPLICABLE....

The gasoline engine used in this equipment has been designed to reduce harmful levels of carbon monoxide (CO), hydrocarbons (HC) and nitrogen oxides (NOx) contained in gasoline exhaust emissions.

This engine has been certified to meet US EPA Evaporative emission requirements in the installed configuration.

Attempting to modify or make adjustments to the engine emission, system by unauthorized personnel without proper training could damage the equipment or create an unsafe condition.

Additionally, modifying the fuel system may adversely affect evaporative emissions, resulting in fines or other penalties.

EMISSION CONTROL LABEL

The emission control label is an integral part of the emission system and is strictly controlled by regulation(s).

The label must remain with the engine for its entire life.

If a replacement emission label is needed, please contact your authorized Honda Engine Distributor.

GENERAL SAFETY

- Δ NEVER lubricate components or attempt service on a running machine.
- Δ ALWAYS allow the machine a proper amount of time to cool before servicing.

NOTICE

- Δ ALWAYS keep the machine in proper running condition.
- Δ ALWAYS become familiar with the components of the machine before operation.
- Δ Fix damage to machine and replace any broken parts immediately.
- Δ ALWAYS store equipment properly when it is not being used. Equipment should be stored in a clean, dry location out of the reach of children and unauthorized personnel.

ENGINE SAFETY

⚠ DANGER

- Δ The engine fuel exhaust gases contain poisonous carbon monoxide. This gas is colorless and odorless, and can cause death if inhaled.
- Δ The engine of this equipment requires an adequate free flow of cooling air. NEVER operate this equipment in any enclosed or narrow area where free flow of the air is restricted. If the air flow is restricted it will cause injury to people and property and serious damage to the equipment or engine. Remember the engine gives off deadly gases.

⚠ WARNING

- Δ NEVER operate the engine with heat shields or guards removed.
- Δ DO NOT remove the engine oil drain plug while the engine is hot. Hot oil will gush out of the engine crankcase and severely scald any persons in the general area of the machine.

⚠ CAUTION

- Δ NEVER touch the hot exhaust manifold, muffler or cylinder. Allow these parts to cool before servicing equipment.
- Δ ALWAYS place the engine ON/OFF switch in the OFF position when the machine is not in use.



- Δ NEVER tamper with the factory settings of the engine or engine governor. Damage to the engine or equipment can result in operation in speed ranges above the maximum allowability.



NOTICE

- Δ Refer to the engine Owners Manual for engine technical questions or information (if applicable).
- Δ NEVER run engine without an air filter or with a dirty air filter. Severe engine damage may occur. Service air filter frequently to prevent engine malfunction (if applicable).
- Δ State health safety codes and Public Resources Code specify that in certain locations, spark arrester must be used on internal combustion engines the used hydrocarbon fuels. A spark arrester is a device designed to prevent accidental discharge of sparks or flames from the engine exhaust. Spark arrestors are qualified and rated by the United States Forecast Service for this purpose. In order to comply with local laws regarding spark arresters, consult the engine distributor of the local Health and Safety Administrator (if applicable).

FUEL SAFETY

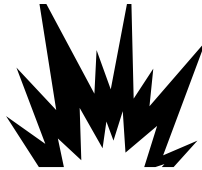
⚠ DANGER

- Δ DO NOT add fuel to equipment if it is placed inside truck bed with plastic liner. Possibility exist of explosion or fire due to static electricity.
- Δ DO NOT start the engine near spilled fuel or combustion fluids. Gasoline fuel is extremely flammable and its vapors can cause an explosion if ignited.
- Δ ALWAYS refuel in a well-ventilated area, away from sparks and open flames.
- Δ ALWAYS use extreme caution when working with flammable liquids.
- Δ DO NOT fill the fuel tank while the engine is running or hot.
- Δ DO NOT overfill tank, since spilled fuel could ignite if it come into contact with hot engine parts or sparks from the ignition system.

GENERAL SAFETY

⚠ DANGER

- △ The engine fuel exhaust gases contain poisonous carbon monoxide. This gas is colorless and odorless, and can cause death if inhaled.
- △ The engine of this equipment requires an adequate free flow of cooling air. NEVER operate this equipment in any enclosed or narrow area where free flow of the air is restricted it will cause injury to people and property and serious damage to the equipment or engine.
- △ NEVER operate the equipment in an explosive atmosphere or near combustible materials. An explosive or fire could result causing severe bodily harm.
- △ DO NOT start the engine near spilled fuel or combustible fluids. Fuel is extremely flammable and its vapors can cause an explosion if ignited.
- △ ALWAYS refuel in a well-ventilated area, away from sparks and open flames
- △ ALWAYS use extreme caution when working with flammable liquids.
- △ DO NOT fill the fuel tank while the engine is running or not.



⚠ CAUTION

PERSONAL SAFETY

- △ Stay alert, watch what you are doing, and use common sense when operating the Minnich Equipment.
- △ DO NOT use the Minnich equipment while tired or under the influence of drugs, alcohol, or medication. A moment of inattention while operating power tools may result in serious personal injury or death.
- △ Dress properly. DO NOT wear loose clothing or jewelry. Tie up long hair. Keep your hair, clothing and gloves away from moving parts. Loose clothes, jewelery, or long hair can be caught in moving parts.
- △ DO NOT overreach. Keep proper footing and balance at all times. Proper footing and balance enables better control in unexpected situations.

TOOL USE AND CARE

- △ DO NOT force any tool. Use the correct tool for your application. The correct tool will do the job better and safer at the rate for which it is designed.
- △ DO NOT use the tool if the switch does not turn on or off. Any tool that cannot be controlled with the switch is dangerous and must be repaired.
- △ Check misalignment or binding of moving parts, breakage of parts and any other condition that may effect the tools operation. If damaged, have your Minnich equipment serviced before using. Many accidents are caused by poorly maintained equipment.
- △ Use only accessories that are recommended by the manufacturer for you model. Accessories that may be suitable for one tool may become hazardous when used on another.

SERVICE

- △ Equipment service must be performed only by qualified repair personnel. Service or maintained performed by unqualified personnel could result in injury or death
- △ When servicing a Minnich equipment, use only identical replacement parts. Use of unauthorized parts may create a risk of injury or death.

NOTICE

To find the latest revision of this publication, visit our website at: www.minnich-mfg.com

NOTICE

THIS MANUAL MUST ACCOMPANY THE EQUIPMENT AT ALL TIMES.

NOTICE

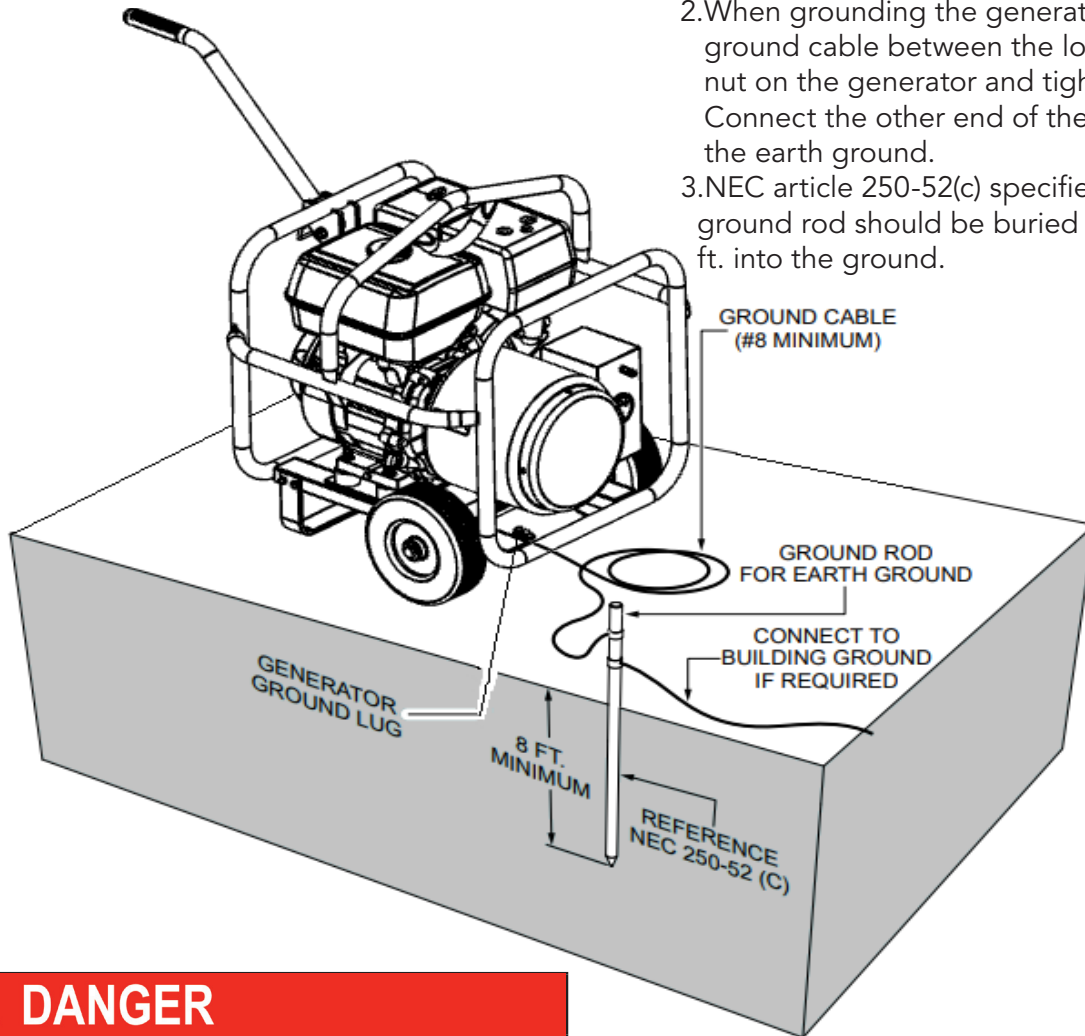
Specifications and part numbers are subject to change without notice.

GENERAL SAFETY

CONNECTING GENERATOR TO THE GROUND

The nut and ground terminal on the generator should always be used to connect the generator to the suitable ground. The ground cable should be #8 size wire (aluminum) minimum. If copper wire is used, #10 size wire minimum should be used.

At the generator, connect the terminal of the ground cable between the lock washer and the nut and tighten the nut fully. Connect the other end of the ground cable to a suitable earth ground (ground rod).



To guard against electric shock and possible damage to the equipment, it is important to promote a good EARTH ground.

Article 250 (grounding) of the National Electrical Code (NEC) provides guide lines for proper grounding and connect to the grounding system of the building as close to the point of cable entry as practice;

NEC article 250-64(b) and 250-66 set of the following grounding requirements:

1. Use one of the following wire types to connect the generator to the earth ground.
 - Copper - 10 AWG (5.3 mm²) or larger.
 - Aluminum - 8 AWG (8.4 mm²) or larger
2. When grounding the generator connect the ground cable between the lock washer and the nut on the generator and tighten the nut fully. Connect the other end of the ground cable to the earth ground.
3. NEC article 250-52(c) specifies that the earth ground rod should be buried a minimum of 8 ft. into the ground.

⚠ DANGER

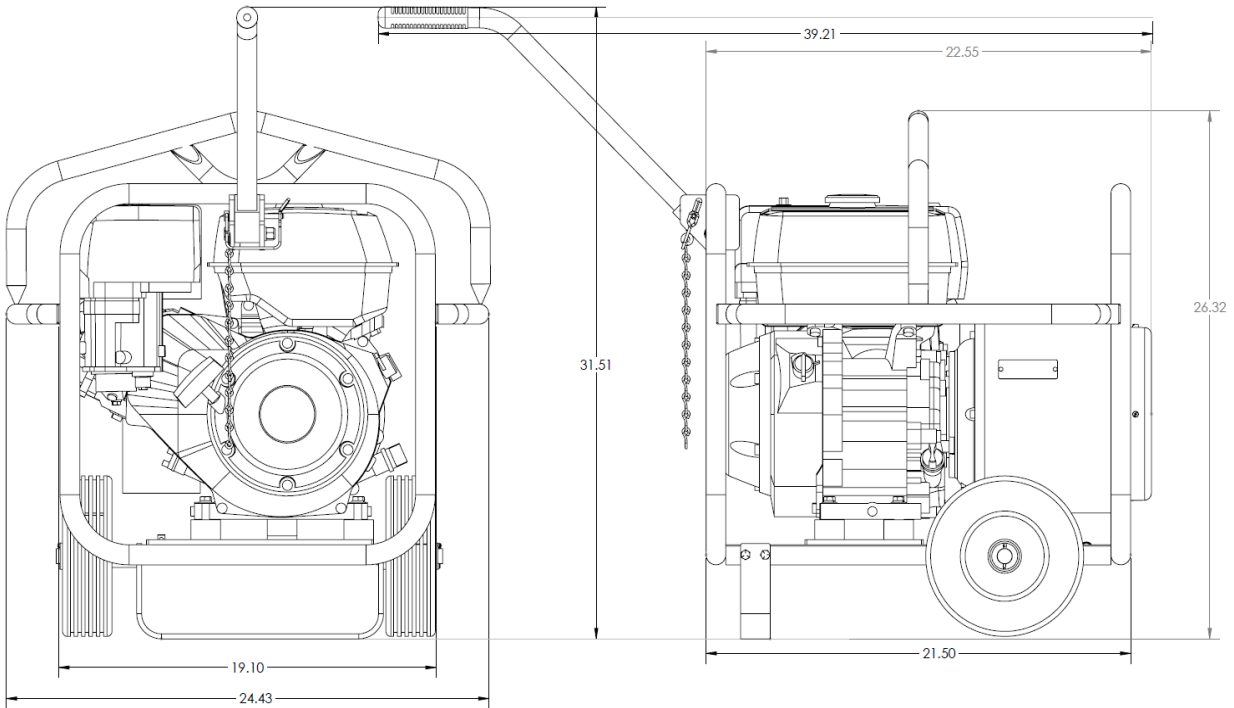


Electric shock can occur when vibrators are used. Pay close attention to handling when operating vibrators and always use rubber boots and gloves to insulate the body from a short circuit.

NOTICE

When any generator to any buildings electrical system ALWAYS with a licensed electrocution

HIGH CYCLE GENERATOR MODELS



MODEL	M-GEN 115V	M-GEN 230V
Type of Power	Honda 8 HP 1 Cycle	Honda 8 HP 1 Cycle
Power	8.0 HP (6.0kw)	8.0 HP (6.0kw)
RPM	3600	3600
Volta @ 180 Cycle	150V	230V
AC Output	4kw 180cy 3ph	4kw 180cy 3ph
Number of Receptacles	2	2
Weight	170 lbs (77.1kg)	170 lbs (77.1kg)

SAFETY DECAL LOCATION

NOTICE

All safety labels on Minnich Manufacturing units have been carefully placed so they can be easily seen at all times. There are several different types of labels on the units. Always keep these warnings free of dirt, concrete, or anything else that restricts visibility. Never remove the labels for any reason. If the label on your machine become worn or in any way difficult to read, call our parts department for replacements.

A



B

419-903-0010
minnich-mfg.com

E



G



G

230V-180Hz
115V-180Hz

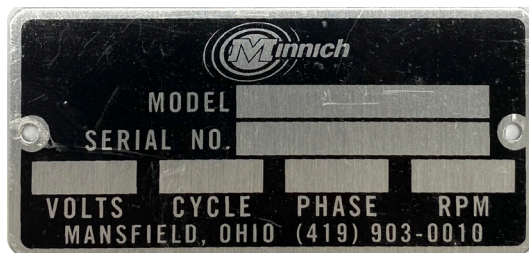
F



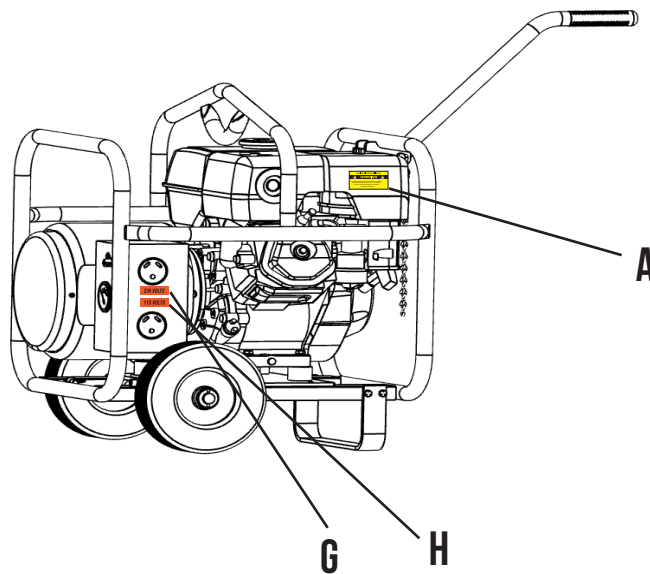
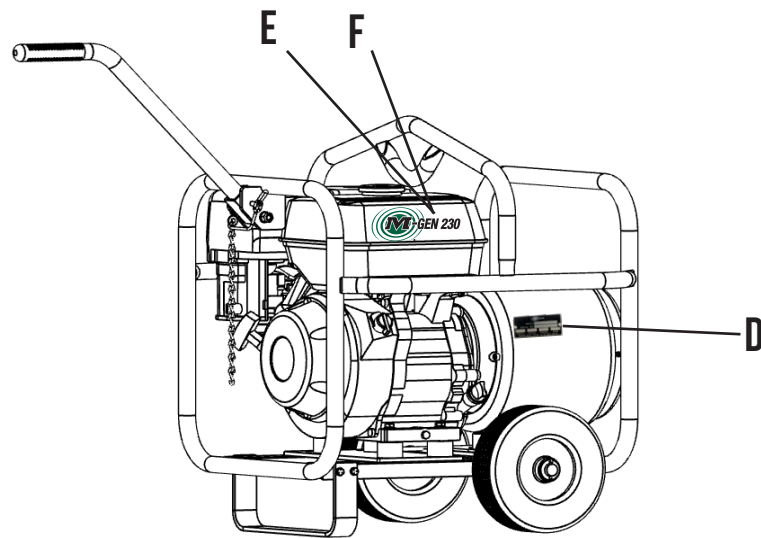
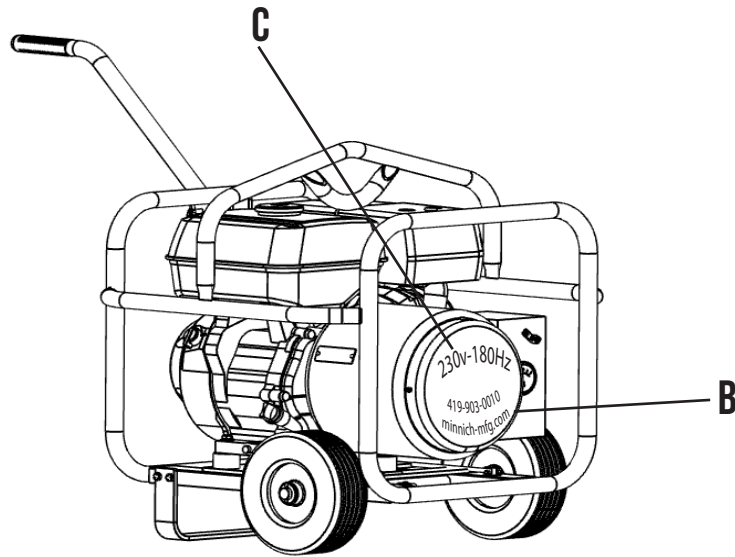
H



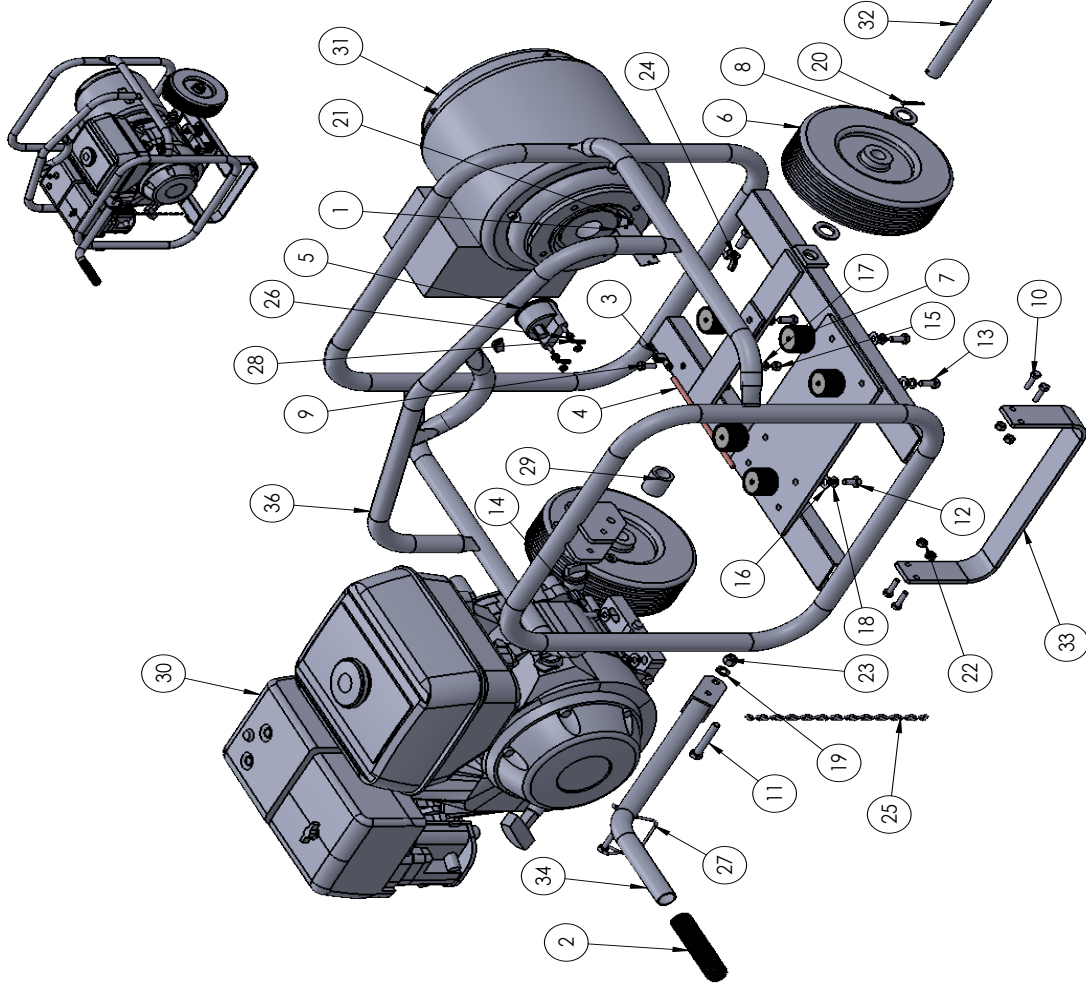
D



SAFETY DECAL LOCATION



ITEM NO.	PART NUMBER	DESCRIPTION	QTY.
1	708	SERIAL TAG	1
2	3016-44	HANDLE - GRIP	1
3	3016-125	GROUND CONNECTOR	2
4	3016-126	GROUND WIRE	7in.
5	3016-141	VOLT METER 0-300 VAC	1
6	3017-19	WHEEL	2
7	3018-28	ISOLATOR	5
8	4674	AXEL WASHER	3
9	6036-75	1/4-20 X 3/4 HHCS GR.5	1
10	6036-100	HHCS 1/4-20 X 1"	4
11	6038-2.25	HHCS, 3/8-16 X 2.25 GR.5	1
12	6057-0.625	HHCS, 5/16-24 X 5/8 GR.5	2
13	6057-0.75	HHCS, 5/16-24 X 3/4 GR.5	3
14	6057-1.25	HHCS, 5/16-24 X 1.25 GR.5	4
15	6070	1/4-20 HEX NUT	1
16	6106	WASHER 5/16"	8
17	6147	LOCKWASHER 1/4	1
18	6148	LOCKWASHER 5/16	9
19	6149	LOCK WASHER 3/8"	1
20	6174-1.00	COITER PIN 1/8" X 1"	2
21	6262-1	SCREW, DRIVE HD RD. #4 X 1/4"	2
22	6402	1/4-20" LOCKNUT	4
23	6404	LOCKNUT 3/8"	1
24	6780-7	WING NUT 3/8-16	1
25	7282	CHAIN, SINGLE JACK #12	8in.
26	7724-9	NUT, HEX #10-32 BRASS	4
27	8479-3	LOCK PIN	1
28	10284	RINF TERMINAL	2
29	11561	SPACER	1
30	36037	HONDA ENGINE 8 H.P.	1
31	36038	GENERATOR (REF. ONLY)	1
32	36073-4	AXLE	1
33	36124-1	BENT FOOT	1
34	A11487	HANDLE WELDMENT	1
35	A13566-1	DECAL KIT, 115V M-GEN	1
36	A36031	FRAME WELDMENT	1



Dimension Hole Size	Tolerance
.015 (.000)	+ .004 (- .001)
.020 (.000)	+ .005 (- .001)
.030 (.000)	+ .006 (- .001)
.040 (.000)	+ .008 (- .001)
.050 (.000)	+ .010 (- .001)
.060 (.000)	+ .012 (- .001)
.070 (.000)	+ .014 (- .001)
.080 (.000)	+ .016 (- .001)
.090 (.000)	+ .018 (- .001)
.100 (.000)	+ .020 (- .001)

TOLERANCES
 (EXCEPT AS NOTED)
 XX ± .000
 XXX ± .005
 XXX ± .010
 XXX ± .015
 XXX ± .020

Dimension in accordance
 with ANSI Y14
 FEATURE NO. LOCATION ROUTING NO. DRAWING NUMBER:
 A36033

TITLE:
 M-GEN 115V GENERATOR
 DO NOT SCALE DRAWING

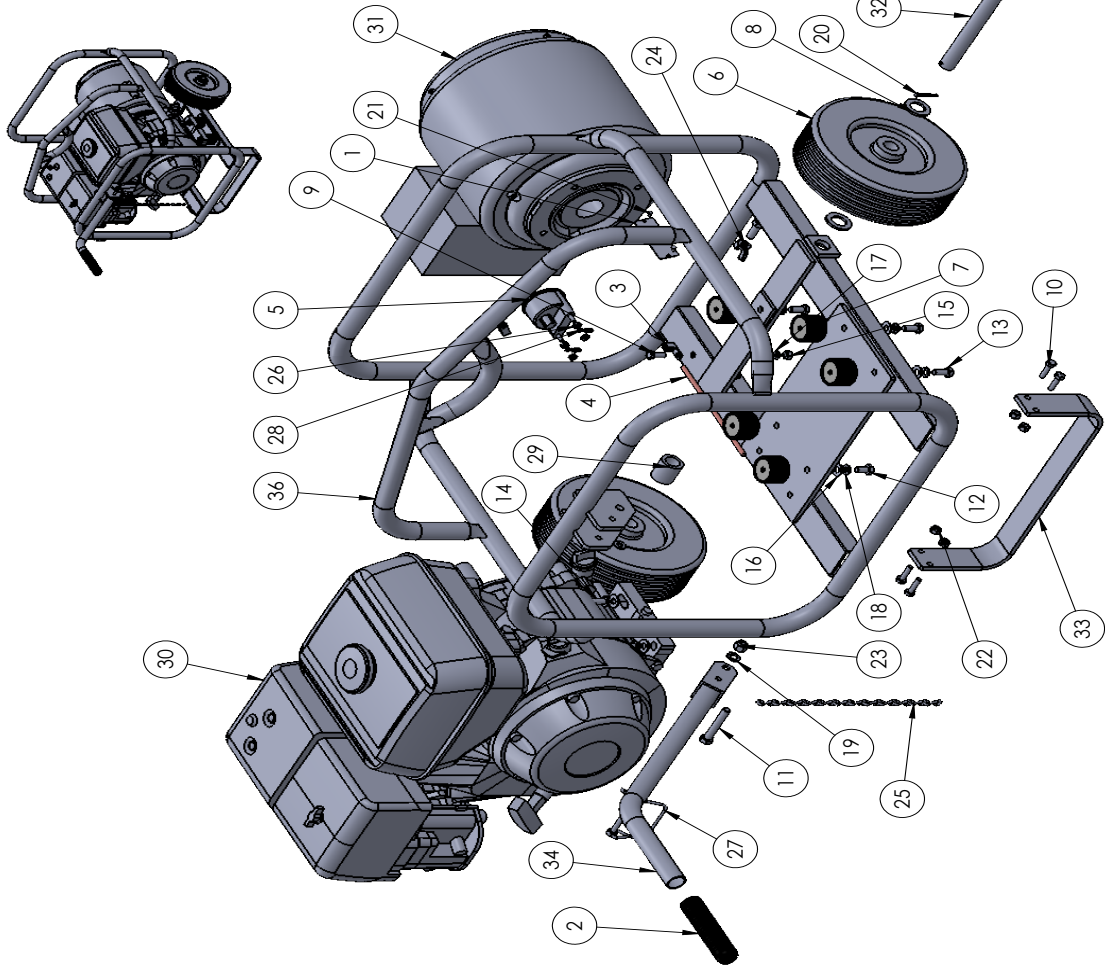
CHECKED BY:
 APPROVED BY:
 DATE: 05/28/2020
 REV. LEVEL:

MATERIAL MATERIAL LOCKWASHER
 THE INFORMATION ON THIS DRAWING IS CONFIDENTIAL TO MINNISCHEGEL CO., INC. AND IS NOT TO BE REPRODUCED OR TRANSMITTED IN ANY FORM OR BY ANY MEANS, ELECTRONIC OR MECHANICAL, INCLUDING PHOTOCOPYING, RECORDING, OR BY ANY INFORMATION STORAGE AND RETRIEVAL SYSTEM.

DRAWN BY:
 RJ

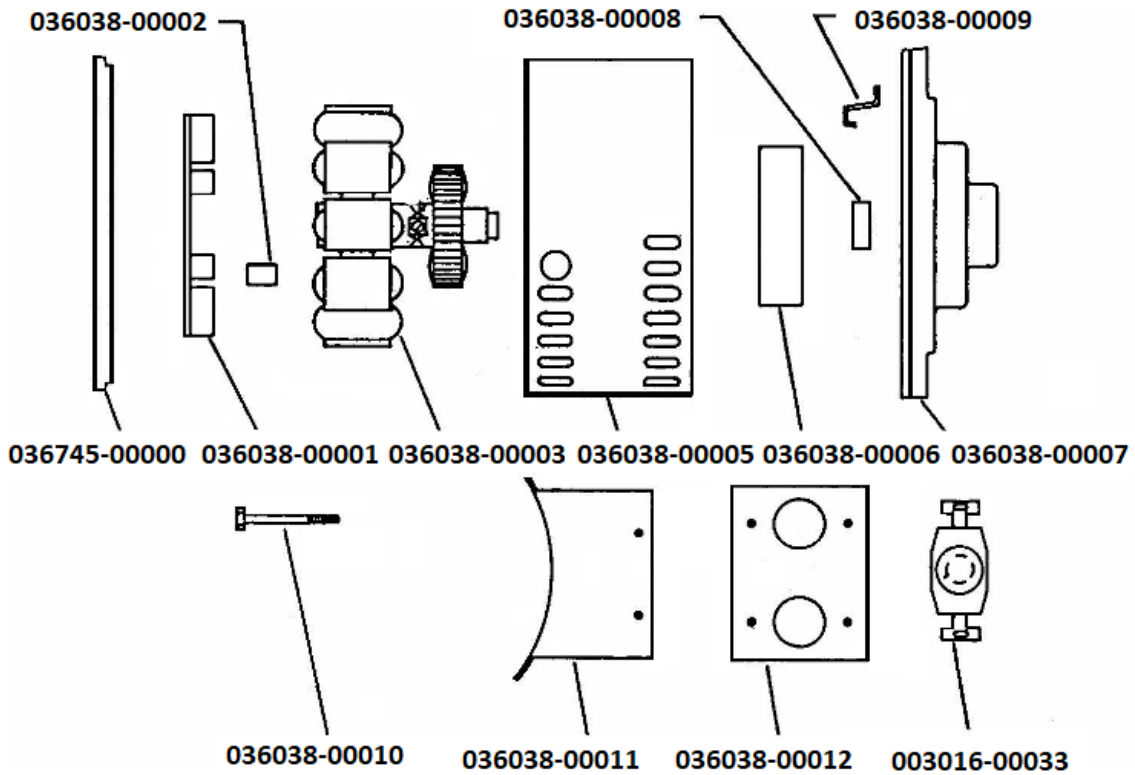
NOT SHOWN:
 A12566-1 DECAL KIT, 115V M-GEN

ITEM NO.	PART NUMBER	DESCRIPTION	QTY.
1	708	SERIAL TAG	1
2	3016-44	HANDLE - GRIP	1
3	3016-125	GROUND CONNECTOR	2
4	3016-126	GROUND WIRE	7in.
5	3016-141	VOLT METER 0-300 VAC	1
6	3017-19	WHEEL	2
7	3018-28	ISOLATOR	5
8	4674	AXEL WASHER	3
9	6036-.75	1/4-20 X 3/4 HHCS GR.5	1
10	6036-1.00	HHCS 1/4-20 X 1"	4
11	6038-2.25	HHCS 3/8-16 X 2.25 GR.5	1
12	6057-0.625	HHCS 5/16-24 X 5/8 GR.5	2
13	6057-0.75	HHCS 5/16-24 X 3/4 GR.5	3
14	6057-1.25	HHCS 5/16-24 X 1.25 GR.5	4
15	6070	1/4-20 HEX NUT	1
16	6106	WASHER 5/16"	8
17	6147	LOCKWASHER 1/4	1
18	6148	LOCKWASHER 5/16	9
19	6149	LOCK WASHER 3/8"	1
20	6174-1.00	COTTER PIN 1/8" X 1"	2
21	6262-1	SCREW, DRIVE HD. RD. #4 X 1/4"	2
22	6402	1/4-20" LOCKNUT	4
23	6404	LOCKNUT 3/8"	1
24	6780-7	WING NUT 3/8-16	1
25	7282	CHAIN, SINGLE JACK #12	8in.
26	7724-9	NUT, HEX #10-32 BRASS	4
27	8479-3	LOCK PIN	1
28	10284	RINF TERMINAL	2
29	11561	SPACER	1
30	36037	HONDA ENGINE 8 H.P.	1
31	36038	GENERATOR (REF. ONLY)	1
32	36073-4	AXLE	1
33	36124-1	BENT FOOT	1
34	A11487	HANDLE WELDMENT	1
35	A13566	DECAL KIT, 230V M-GEN	1
36	A36031	FRAME WELDMENT	1



Dimension	Tolerance
0.031 (198) / 2.02	+0.002 / .001
0.032 (198) / 2.01	+0.002 / .001
0.033 (198) / 2.00	+0.002 / .001
0.034 (198) / 1.99	+0.002 / .001
0.035 (198) / 1.98	+0.002 / .001
0.036 (198) / 1.97	+0.002 / .001
0.037 (198) / 1.96	+0.002 / .001
0.038 (198) / 1.95	+0.002 / .001
0.039 (198) / 1.94	+0.002 / .001
0.040 (198) / 1.93	+0.002 / .001
0.041 (198) / 1.92	+0.002 / .001
0.042 (198) / 1.91	+0.002 / .001
0.043 (198) / 1.90	+0.002 / .001
0.044 (198) / 1.89	+0.002 / .001
0.045 (198) / 1.88	+0.002 / .001
0.046 (198) / 1.87	+0.002 / .001
0.047 (198) / 1.86	+0.002 / .001
0.048 (198) / 1.85	+0.002 / .001
0.049 (198) / 1.84	+0.002 / .001
0.050 (198) / 1.83	+0.002 / .001
0.051 (198) / 1.82	+0.002 / .001
0.052 (198) / 1.81	+0.002 / .001
0.053 (198) / 1.80	+0.002 / .001
0.054 (198) / 1.79	+0.002 / .001
0.055 (198) / 1.78	+0.002 / .001
0.056 (198) / 1.77	+0.002 / .001
0.057 (198) / 1.76	+0.002 / .001
0.058 (198) / 1.75	+0.002 / .001
0.059 (198) / 1.74	+0.002 / .001
0.060 (198) / 1.73	+0.002 / .001
0.061 (198) / 1.72	+0.002 / .001
0.062 (198) / 1.71	+0.002 / .001
0.063 (198) / 1.70	+0.002 / .001
0.064 (198) / 1.69	+0.002 / .001
0.065 (198) / 1.68	+0.002 / .001
0.066 (198) / 1.67	+0.002 / .001
0.067 (198) / 1.66	+0.002 / .001
0.068 (198) / 1.65	+0.002 / .001
0.069 (198) / 1.64	+0.002 / .001
0.070 (198) / 1.63	+0.002 / .001
0.071 (198) / 1.62	+0.002 / .001
0.072 (198) / 1.61	+0.002 / .001
0.073 (198) / 1.60	+0.002 / .001
0.074 (198) / 1.59	+0.002 / .001
0.075 (198) / 1.58	+0.002 / .001
0.076 (198) / 1.57	+0.002 / .001
0.077 (198) / 1.56	+0.002 / .001
0.078 (198) / 1.55	+0.002 / .001
0.079 (198) / 1.54	+0.002 / .001
0.080 (198) / 1.53	+0.002 / .001
0.081 (198) / 1.52	+0.002 / .001
0.082 (198) / 1.51	+0.002 / .001
0.083 (198) / 1.50	+0.002 / .001
0.084 (198) / 1.49	+0.002 / .001
0.085 (198) / 1.48	+0.002 / .001
0.086 (198) / 1.47	+0.002 / .001
0.087 (198) / 1.46	+0.002 / .001
0.088 (198) / 1.45	+0.002 / .001
0.089 (198) / 1.44	+0.002 / .001
0.090 (198) / 1.43	+0.002 / .001
0.091 (198) / 1.42	+0.002 / .001
0.092 (198) / 1.41	+0.002 / .001
0.093 (198) / 1.40	+0.002 / .001
0.094 (198) / 1.39	+0.002 / .001
0.095 (198) / 1.38	+0.002 / .001
0.096 (198) / 1.37	+0.002 / .001
0.097 (198) / 1.36	+0.002 / .001
0.098 (198) / 1.35	+0.002 / .001
0.099 (198) / 1.34	+0.002 / .001
0.100 (198) / 1.33	+0.002 / .001
0.101 (198) / 1.32	+0.002 / .001
0.102 (198) / 1.31	+0.002 / .001
0.103 (198) / 1.30	+0.002 / .001
0.104 (198) / 1.29	+0.002 / .001
0.105 (198) / 1.28	+0.002 / .001
0.106 (198) / 1.27	+0.002 / .001
0.107 (198) / 1.26	+0.002 / .001
0.108 (198) / 1.25	+0.002 / .001
0.109 (198) / 1.24	+0.002 / .001
0.110 (198) / 1.23	+0.002 / .001
0.111 (198) / 1.22	+0.002 / .001
0.112 (198) / 1.21	+0.002 / .001
0.113 (198) / 1.20	+0.002 / .001
0.114 (198) / 1.19	+0.002 / .001
0.115 (198) / 1.18	+0.002 / .001
0.116 (198) / 1.17	+0.002 / .001
0.117 (198) / 1.16	+0.002 / .001
0.118 (198) / 1.15	+0.002 / .001
0.119 (198) / 1.14	+0.002 / .001
0.120 (198) / 1.13	+0.002 / .001
0.121 (198) / 1.12	+0.002 / .001
0.122 (198) / 1.11	+0.002 / .001
0.123 (198) / 1.10	+0.002 / .001
0.124 (198) / 1.09	+0.002 / .001
0.125 (198) / 1.08	+0.002 / .001
0.126 (198) / 1.07	+0.002 / .001
0.127 (198) / 1.06	+0.002 / .001
0.128 (198) / 1.05	+0.002 / .001
0.129 (198) / 1.04	+0.002 / .001
0.130 (198) / 1.03	+0.002 / .001
0.131 (198) / 1.02	+0.002 / .001
0.132 (198) / 1.01	+0.002 / .001
0.133 (198) / 1.00	+0.002 / .001
0.134 (198) / 0.99	+0.002 / .001
0.135 (198) / 0.98	+0.002 / .001
0.136 (198) / 0.97	+0.002 / .001
0.137 (198) / 0.96	+0.002 / .001
0.138 (198) / 0.95	+0.002 / .001
0.139 (198) / 0.94	+0.002 / .001
0.140 (198) / 0.93	+0.002 / .001
0.141 (198) / 0.92	+0.002 / .001
0.142 (198) / 0.91	+0.002 / .001
0.143 (198) / 0.90	+0.002 / .001
0.144 (198) / 0.89	+0.002 / .001
0.145 (198) / 0.88	+0.002 / .001
0.146 (198) / 0.87	+0.002 / .001
0.147 (198) / 0.86	+0.002 / .001
0.148 (198) / 0.85	+0.002 / .001
0.149 (198) / 0.84	+0.002 / .001
0.150 (198) / 0.83	+0.002 / .001
0.151 (198) / 0.82	+0.002 / .001
0.152 (198) / 0.81	+0.002 / .001
0.153 (198) / 0.80	+0.002 / .001
0.154 (198) / 0.79	+0.002 / .001
0.155 (198) / 0.78	+0.002 / .001
0.156 (198) / 0.77	+0.002 / .001
0.157 (198) / 0.76	+0.002 / .001
0.158 (198) / 0.75	+0.002 / .001
0.159 (198) / 0.74	+0.002 / .001
0.160 (198) / 0.73	+0.002 / .001
0.161 (198) / 0.72	+0.002 / .001
0.162 (198) / 0.71	+0.002 / .001
0.163 (198) / 0.70	+0.002 / .001
0.164 (198) / 0.69	+0.002 / .001
0.165 (198) / 0.68	+0.002 / .001
0.166 (198) / 0.67	+0.002 / .001
0.167 (198) / 0.66	+0.002 / .001
0.168 (198) / 0.65	+0.002 / .001
0.169 (198) / 0.64	+0.002 / .001
0.170 (198) / 0.63	+0.002 / .001
0.171 (198) / 0.62	+0.002 / .001
0.172 (198) / 0.61	+0.002 / .001
0.173 (198) / 0.60	+0.002 / .001
0.174 (198) / 0.59	+0.002 / .001
0.175 (198) / 0.58	+0.002 / .001
0.176 (198) / 0.57	+0.002 / .001
0.177 (198) / 0.56	+0.002 / .001
0.178 (198) / 0.55	+0.002 / .001
0.179 (198) / 0.54	+0.002 / .001
0.180 (198) / 0.53	+0.002 / .001
0.181 (198) / 0.52	+0.002 / .001
0.182 (198) / 0.51	+0.002 / .001
0.183 (198) / 0.50	+0.002 / .001
0.184 (198) / 0.49	+0.002 / .001
0.185 (198) / 0.48	+0.002 / .001
0.186 (198) / 0.47	+0.002 / .001
0.187 (198) / 0.46	+0.002 / .001
0.188 (198) / 0.45	+0.002 / .001
0.189 (198) / 0.44	+0.002 / .001
0.190 (198) / 0.43	+0.002 / .001
0.191 (198) / 0.42	+0.002 / .001
0.192 (198) / 0.41	+0.002 / .001
0.193 (198) / 0.40	+0.002 / .001
0.194 (198) / 0.39	+0.002 / .001
0.195 (198) / 0.38	+0.002 / .001
0.196 (198) / 0.37	+0.002 / .001
0.197 (198) / 0.36	+0.002 / .001
0.198 (198) / 0.35	+0.002 / .001
0.199 (198) / 0.34	+0.002 / .001
0.200 (198) / 0.33	+0.002 / .001
0.201 (198) / 0.32	+0.002 / .001
0.202 (198) / 0.31	+0.002 / .001
0.203 (198) / 0.30	+0.002 / .001
0.204 (198) / 0.29	+0.002 / .001
0.205 (198) / 0.28	+0.002 / .001
0.206 (198) / 0.27	+0.002 / .001
0.207 (198) / 0.26	+0.002 / .001
0.208 (198) / 0.25	+0.002 / .001
0.209 (198) / 0.24	+0.002 / .001
0.210 (198) / 0.23	+0.002 / .001
0.211 (198) / 0.22	+0.002 / .001
0.212 (198) / 0.21	+0.002 / .001
0.213 (198) / 0.20	+0.002 / .001
0.214 (198) / 0.19	+0.002 / .001
0.215 (198) / 0.18	+0.002 / .001
0.216 (198) / 0.17	+0.002 / .001
0.217 (198) / 0.16	+0.002 / .001
0.218 (198) / 0.15	+0.002 / .001
0.219 (198) / 0.14	+0.002 / .001
0.220 (198) / 0.13	+0.002 / .001
0.221 (198) / 0.12	+0.002 / .001
0.222 (198) / 0.11	+0.002 / .001
0.223 (198) / 0.10	+0.002 / .001
0.224 (198) / 0.09	+0.002 / .001
0.225 (198) / 0.08	+0.002 / .001
0.226 (198) / 0.07	+0.002 / .001
0.227 (198) / 0.06	+0.002 / .001
0.228 (198) / 0.05	+0.002 / .001
0.229 (198) / 0.04	+0.002 / .001
0.230 (198) / 0.03	+0.002 / .001
0.231 (198) / 0.02	+0.002 / .001
0.232 (198) / 0.01	+0.002 / .001
0.233 (198) / 0.00	+0.002 / .001
0.234 (198) / -0.01	+0.002 / .001
0.235 (198) / -0.02	+0.002 / .001
0.236 (198) / -0.03	+0.002 / .001
0.237 (198) / -0.04	+0.002 / .001
0.238 (198) / -0.05	+0.002 / .001
0.239 (198) / -0.06	+0.002 / .001
0.240 (198) / -0.07	+0.002 / .001
0.241 (198) / -0.08	+0.002 / .001
0.242 (198) / -0.09	+0.002 / .001
0.243 (198) / -0.10	+0.002 / .001
0.244 (198) / -0.11	+0.002 / .001
0.245 (198) / -0.12	+0.002 / .001
0.246 (198) / -0.13	+0.002 / .001
0.247 (198) / -0.14	+0.002 / .001
0.248 (198) / -0.15	+0.002 / .001
0.249 (198) / -0.16	+0.002 / .001
0.250 (198) / -0.17	+0.002 / .001
0.251 (198) / -0.18	+0.002 / .001
0.252 (198) / -0.19	+0.002 / .001
0.253 (198) / -0.20	+0.002 / .001
0.254 (198) / -0.21	+0.002 / .001
0.255 (198) / -0.22	+0.002 / .001
0.256 (198) / -0.23	+0.002 / .001
0.257 (198) / -0.24	+0.002 / .001
0.258 (198) / -0.25	+0.002 / .001
0.259 (198) / -0.26	+0.002 / .001
0.260 (198) / -0.27	+0.002 / .001
0.261 (198) / -0.28	+0.002 / .001
0.262 (198) / -0.29	+0.002 / .001
0.263 (198) / -0.30	+0.002 / .001
0.264 (198) / -0.31	+0.002 / .001
0.265 (198) / -0.32	+0.002 / .001
0.266 (198) / -0.33	+0.002 / .001
0.267 (198) / -0.34	+0.002 / .001
0.268 (198) / -0.35	+0.002 / .001
0.269 (198) / -0.36	+0.002 / .001
0.270 (198) / -0.37	+0.002 / .001
0.271 (198) / -0.38	+0.002 / .001
0.272 (198) / -0.39	+0.002 / .001
0.273 (198) / -0.40	+0.002 / .001
0.274 (198) / -0.41	+0.002 / .001
0.275 (198) / -0.42	+0.002 / .001
0.276 (198) / -0.43	+0.002 / .001
0.277 (198) / -0.44	+0.002 / .001
0.278 (198) / -0.45	+0.002 / .001
0.279 (198) / -0.46	+0.002 / .001
0.280 (198) / -0.47	+0.002 / .001
0.281 (198) / -0.48	+0.002 / .001
0.282 (198) / -0.49	+0.002 / .001
0.283 (198) / -0.50	+0.002 / .001
0.284 (198) / -0.51	+0.002 / .001
0.285 (198) / -0.52	+0.002 / .001
0.286 (198) / -0.53	+0.002 / .001
0.287 (198) / -0.54	+0.002 / .001
0.288	

HIGH CYCLE GENERATOR ELECTRIC MOTOR PARTS SHEETS



PART #	DESCRIPTION	QTY.
036745-00000	Inboard Endbell	1
036038-00001	Fan Assembly	1
036038-00002	Fan Spacer	3
036038-00003	Main Rotor Assembly	1
036038-00005	Main Stator Assembly	1
036038-00006	Exciter Field	1
036038-00007	Outboard Endbell	1
036038-00008	Outboard Bearing	1
036038-00009	Field Assembly Clamp	2
036038-00010	Rotor Retainer Bolt	1
036038-00011	Terminal Box	1
036038-00012	Terminal Box Cover	1
003016-00033	Outlet	2

GENERATOR WIRING INSTRUCTIONS

230 VOLTS:

Connect #4 and #7 wires together, #5 and #8 wires together, and #6 and #9 wires together.

Connect #1 wire to terminal X, #2 wire to terminal Y, and #3 wire to terminal Z of outlet.

115 VOLT:

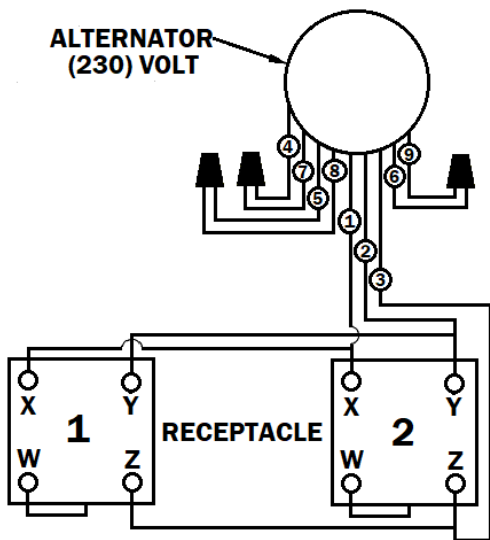
Connection #4, #5, and #6 wires together. Connect #1 and #7 wires to terminal X, #2 and #8 wires to terminal Y, and #3 and #9 wires to terminal Z of outlet.

⚠ CAUTION

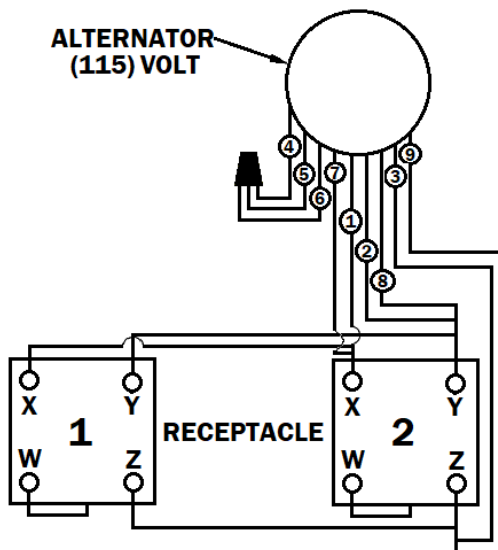
115 volts generator requires heavier gauge wires from outlet to outlet in order to carry higher current between outlets. #10 gauge stranded wire is recommended.

NOTICE

If rotation of vibrator is wrong, the rotation can be changing by switched any two current carrying leads at the generator outlets.

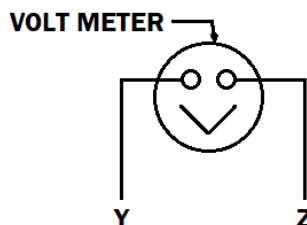


- #4 - #7 TOGETHER
- #5 - #8 TOGETHER
- #6 - #9 TOGETHER
- 1 TO RECEPTACLE X
- 2 TO RECEPTACLE Y
- 3 TO RECEPTACLE Z



- #4 - #5 - #6 TOGETHER
- #1 - #7 TOGETHER TO RECEPTACLE X
- #2 - #8 TOGETHER TO RECEPTACLE Y
- #3 - #9 TOGETHER TO RECEPTACLE Z

TESTING:



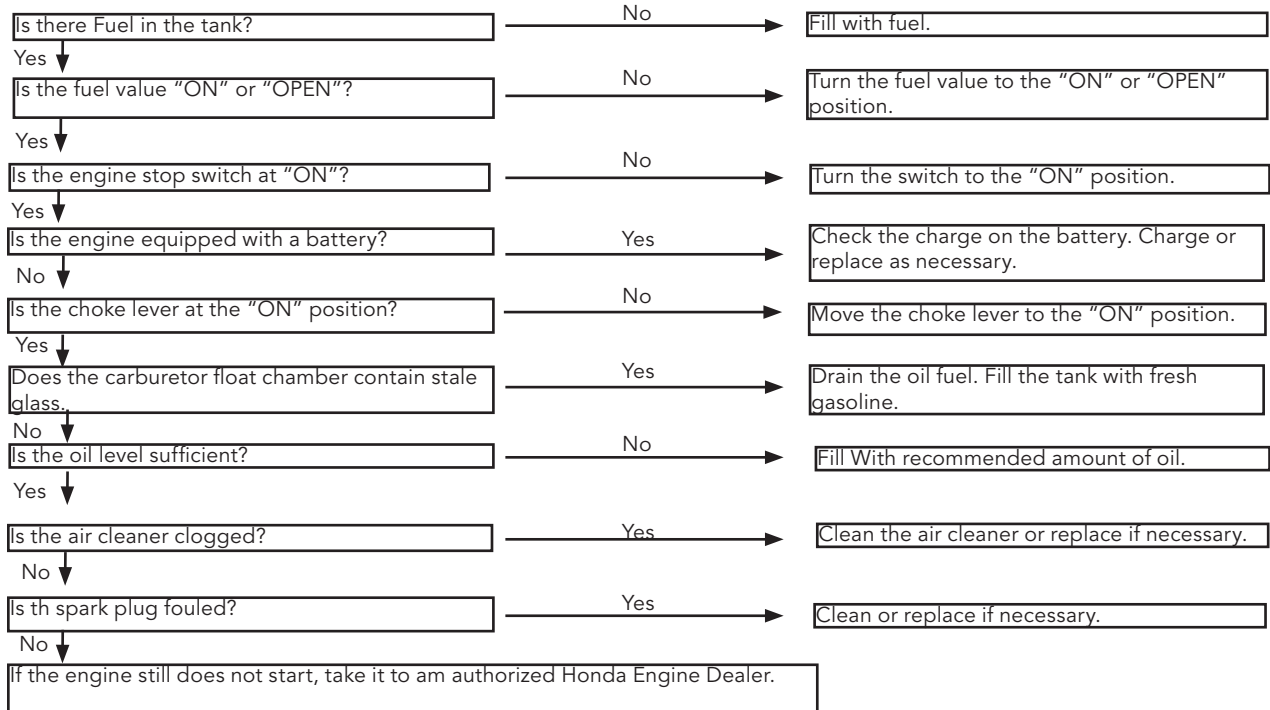
PLUG VOLT METER INTO Y & Z IN RECPTACLE 1
(115) READING 140V
(230) READING 290V

GX270**GX250**

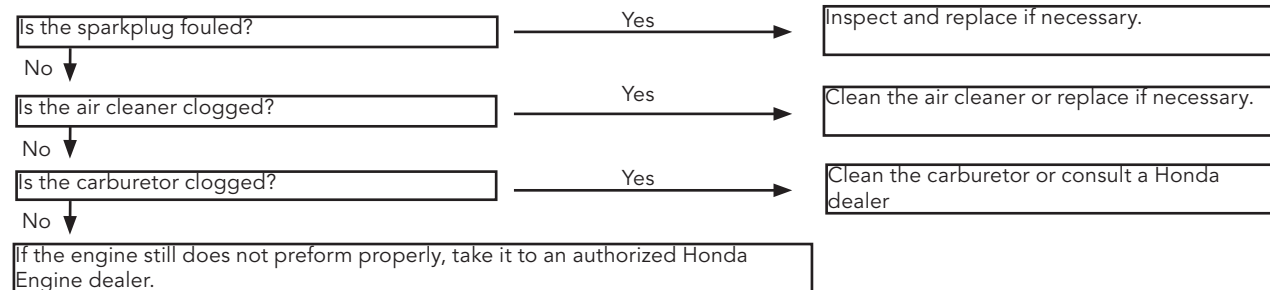
Engine Type	Air-Cooled 4-stroke OHV
Bore X Stroke	77 X 58 mm
Displacement	270 cm ²
Net Power Output*	8.5 HP (6.3 kW) @ 3,600 rpm
Net Torque	14.1 lb-ft (19.1 Nm) @ 2,500 rpm
PTO Shaft Rotation	Counterclockwise (from PTO shaft side)
Compression Ratio	8.5:1
Air Cleaner	Dual element
Oil Cleaner	1.16 US qt (1.1 L)
Fuel Tank Capacity	5.6 U.S. qts (5.3 liters)
Fuel	Unleaded 86 octane or higher
Dry Rate	55lb (25 kg)

GENERAL ENGINE INFORMATION

ENGINE DOESN'T STARTS OR IS HARD TO START:

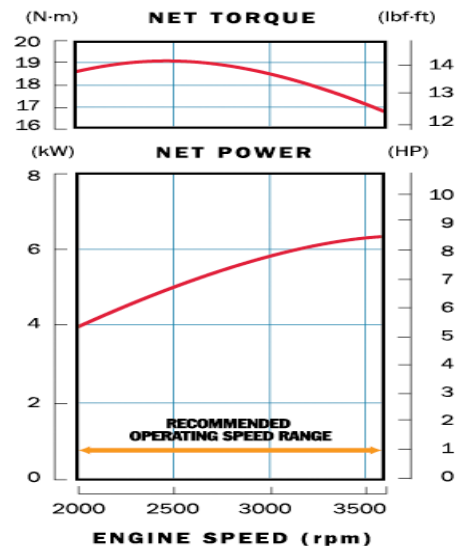


ENGINE LACKS POWER:

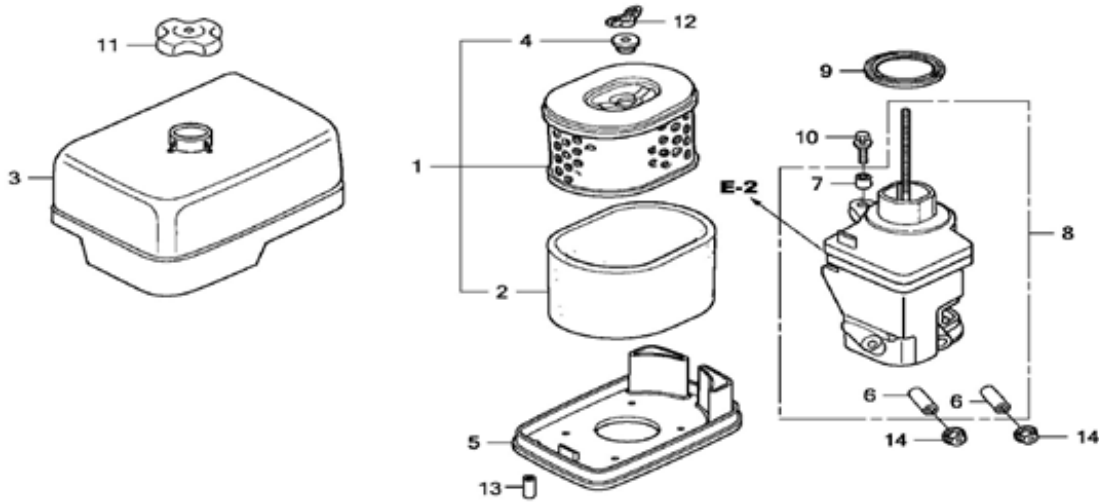


FUEL INFORMATION:

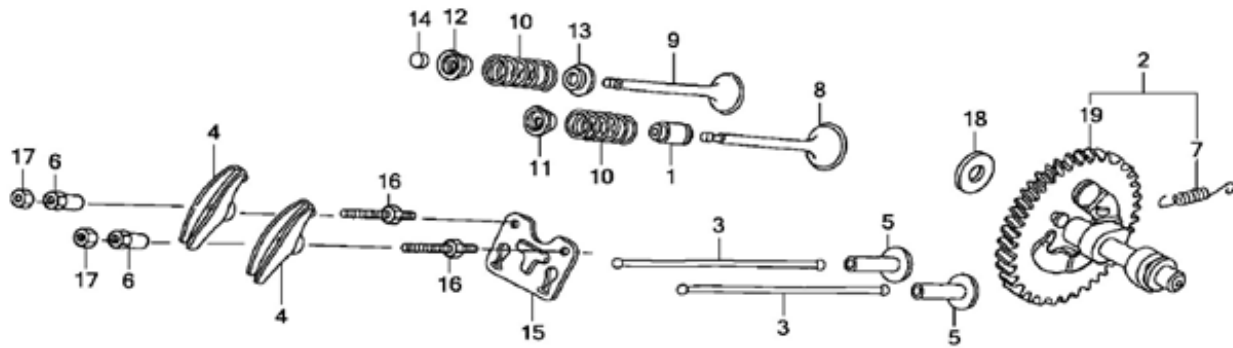
- Δ Honda engines are certified and designed to run on regular unleaded gasoline.
- Δ Do not use gasoline containing more than 10% ethanol in your Honda powered equipment.
- Δ Keep your engine's air filter properly serviced. Check it before each use.
- Δ E85 contains 85% ethanol and must not be used in Honda engines.
- Δ Keep your fuel tank and fuel storage tank filled with fresh fuel and out of direct sunlight.
- Δ Use a fuel stabilizer along with fresh fuel when your engine is stored
- Δ Use a gas station with a reputation for quality fuel.



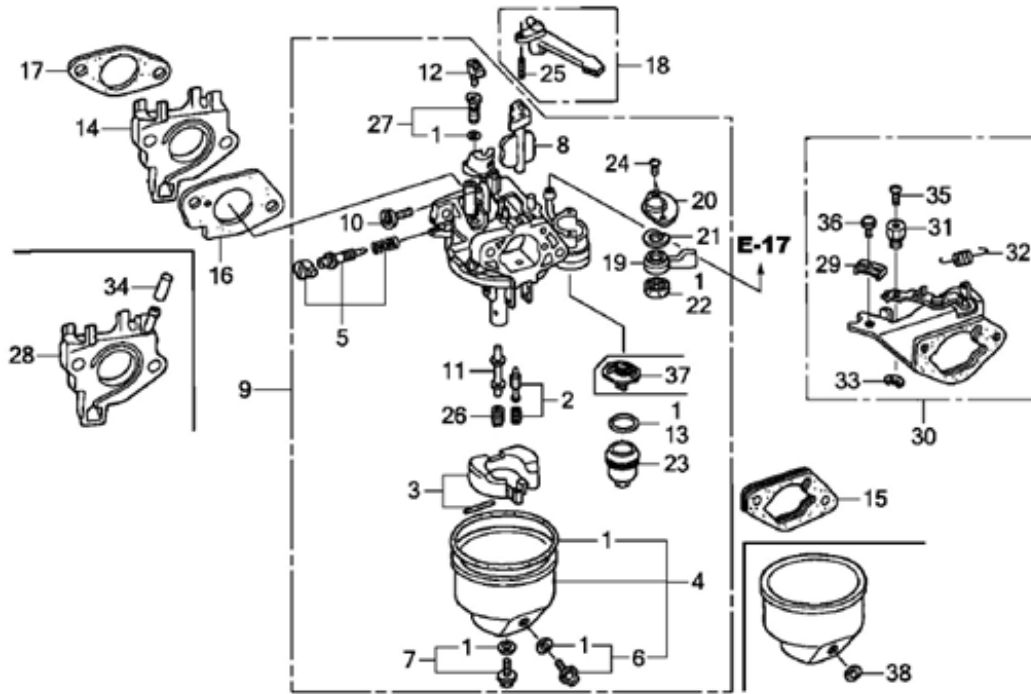
GX270



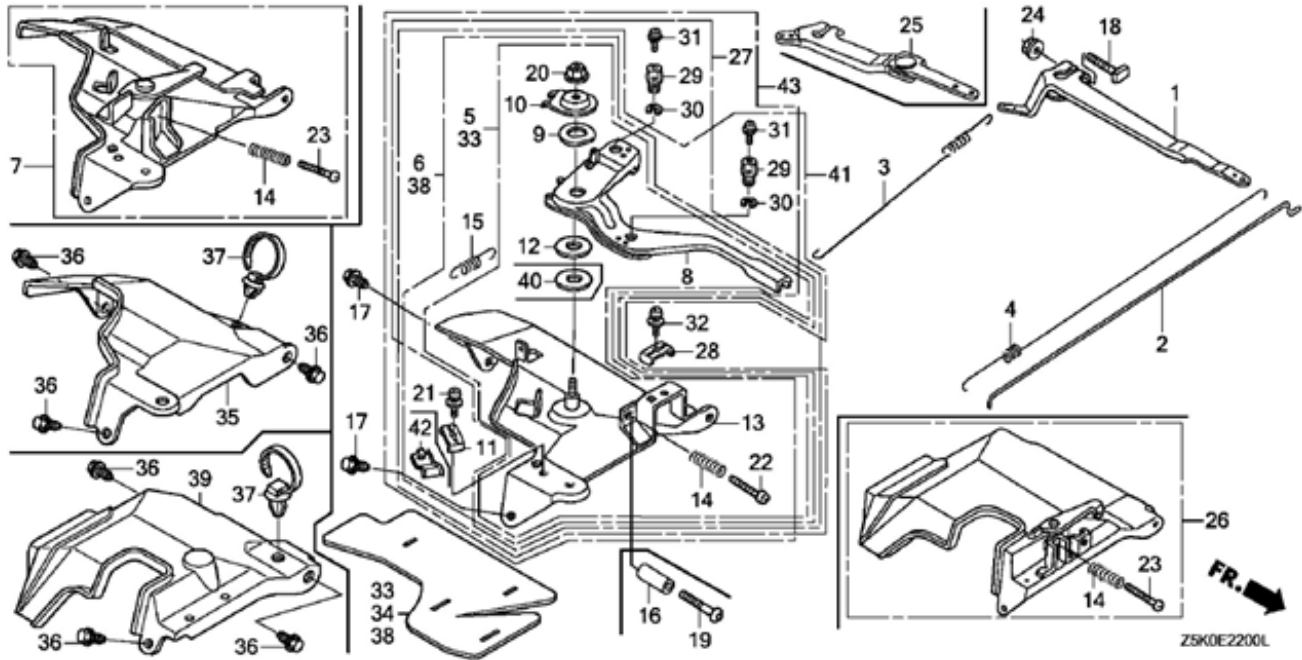
REF #	PART #	QTY.	DESCRIPTION
1	036037-00001	1	ELEMENT, AIR CLEANER
2	036037-00002	1	FILTER (OUTER)
3	036037-00003	1	COVER, AIR CLEANER HOUSING
4	036037-00004	1	GROMMET, AIR CLEANER
5	036037-00005	1	NOSE, MUFFLER
6	036037-00006	2	COLLAR, AIR
7	036037-00007	1	COLLAR B, AIR CLEANER
8	036037-00008	1	ELBOW, AIR CLEANER
9	036037-00009	1	GASKET, AIR CLEANER HOUSING
10	036037-00010	1	BOLT-WASHER (6X22)
11	036037-00011	1	NUT, AIR CLEANER COVER
12	036037-00012	1	WINGNUT, TOOL
14	036037-00013	1	NUT, FLANGE (6MM)



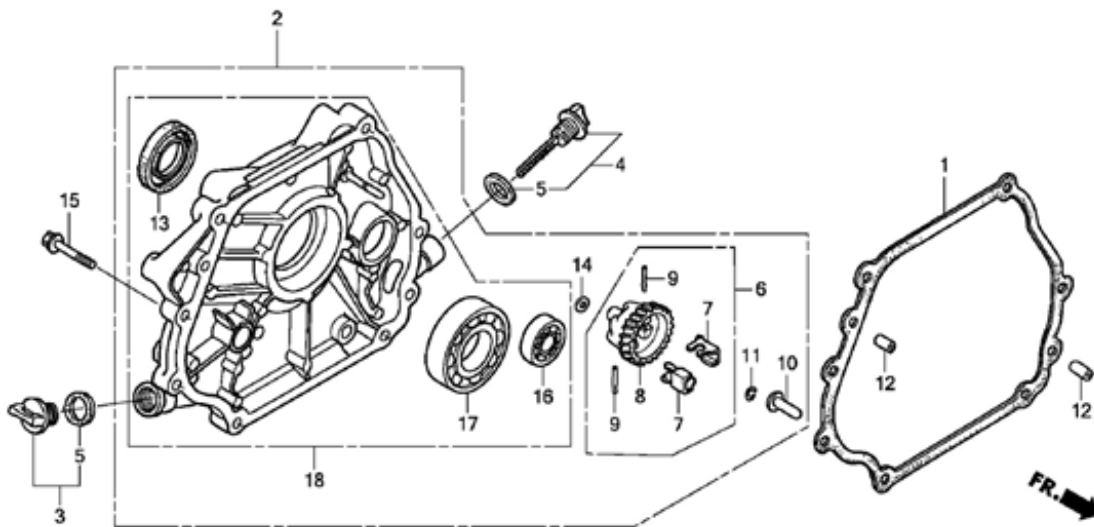
REF #	PART #	QTY.	DESCRIPTION
1	036037-00014	1	SEAL, VALVE STEM
3	036037-00015	2	ROD, PUSH
4	036037-00016	2	ARM, VALVE ROCKER
5	036037-00017	2	LIFTER, VALVE
6	036037-00018	2	PIVOT, ROCKER ARM
8	036037-00019	1	VALVE, INTAKE
9	036037-00020	1	VALVE, EXHAUST
10	03607-00021	2	SPRING, VALVE
11	036037-00023	1	RETAINER, IN. VALVE SPRING
12	036037-00024	1	RETAINER, IN. VALVE SPRING
13	036037-00025	1	SEAT, VALVE SPRING
15	036037-00026	1	GUIDE, PUSH ROD
16	036037-00027	2	BOLT, PIVOT (8MM)
17	036037-00028	2	NUT, PIVOT ADJ.
19	036037-00029	1	CAMSHAFT (STD)



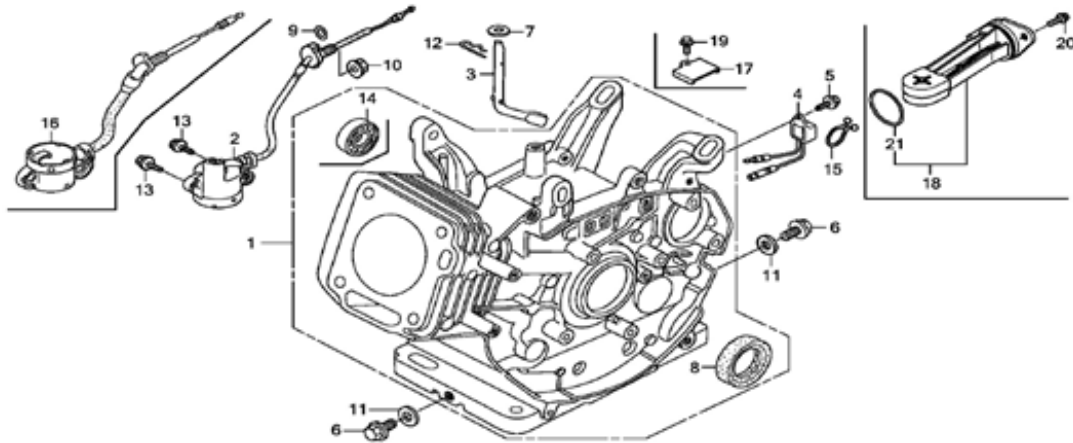
REF #	PART #	QTY.	DESCRIPTION	REF #	PART #	QTY.	DESCRIPTION
1	036037-00029	1	GASKET SET	17	036037-00045	1	GASKET, INSULATOR
2	036037-00030	1	VALVE SET, FLOAT	18	036037-00046	1	LEVER, CHOKE (STD)
3	036037-00031	1	FLOAT SET	19	036037-00047	1	LEVER, VALVE
4	036037-00032	1	CHAMBER SET, FLOAT	20	036087-00048	1	PLATE, LEVER SETTING
5	036037-00033	1	SCREW SET	21	036037-00049	1	SPRING, PETCOCK LEVER
6	036037-00034	1	SCREW SET, DRAIN	22	036037-00050	1	GASKET, VALVE
7	036037-00035	1	SCREW SET	23	036037-00051	1	CUP, FUEL STRAINER
8	036037-00036	1	CHOKE SET	24	036037-00052	2	SCREW, PAN
9	036037-00037	1	CARBURETOR ASSY	25	036037-00053	1	PIN, SPRING (2X12)
10	036037-00038	1	SCREW, THROTTLE STOP	26	036037-00054	1	JET, MAIN (#82)
11	036037-00039	1	NOZZLE, MAIN	26	036037-00055	1	JET, MAIN (#85)
12	036037-00040	1	COLLAR, SET	26	036037-00056	1	JET, MAIN (#88)
13	036037-00041	1	GASKET, FUEL STRAINER CUP	27	036037-00057	1	JET SET, PILOT (#35)
14	036037-00042	1	INSULATOR, CARBURETOR	37	036037-00058	1	FILTER, CUP
15	036037-00043	1	SPACER, CARBURETOR	38	036037-00059	1	WASHER, PLAIN (6.2X10.7 DRAIN)
16	036037-00044	1	GASKET, CARBURETOR				



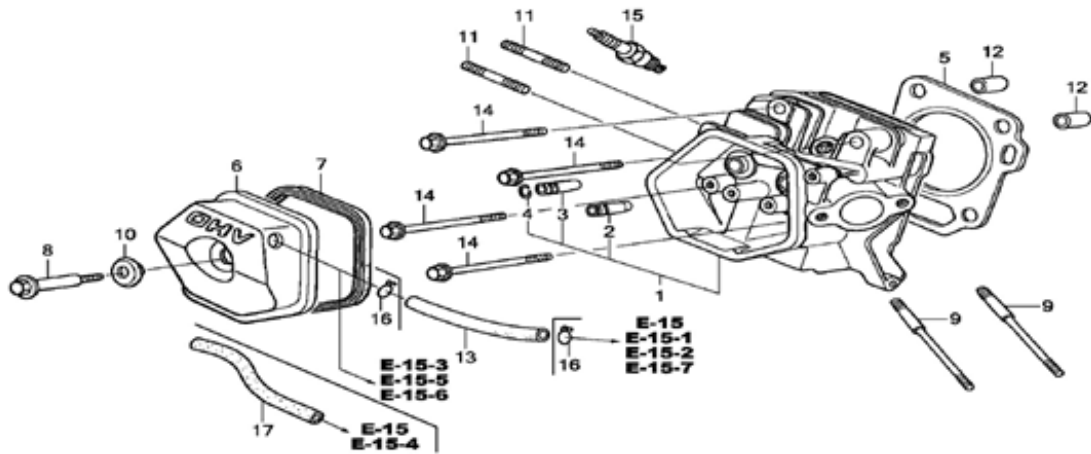
REF #	PART #	QTY.	DESCRIPTION
1	036037-00060	1	ARM, GOVERNOR
2	036037-00061	1	ROD, GOVERNOR
3	036037-00062	1	SPRING, GOVERNOR
4	036037-00063	1	SPRING, THROTTLE RETURN
6	036037-00064	1	CONTROL ASSY. (REMOTE)
8	036037-00065	1	LEVER, CONTROL
9	036037-00066	1	SPRING, LEVER
10	036037-00067	1	WASHER, CONTROL LEVER
11	036037-00068	1	HOLDER, CABLE
12	036037-00069	1	SPACER, CONTROL LEVER
13	036037-00070	1	BASE, CONTROL
14	036037-00071	1	SPRING, CONTROL ADJUSTING
15	036037-00072	1	SPRING, CABLE RETURN
17	036037-00073	2	BOLT, FLANGE (6X12)
18	036037-00074	1	BOLT, GOVERNOR ARM
20	036037-00075	1	NUT, SELF-LOCK (6MM)
21	036037-00076	1	SCREW, PAN (5X16)
22	036037-00077	1	SCREW, PAN (5X28)
24	036037-00078	1	NUT, FLANGE (6MM)



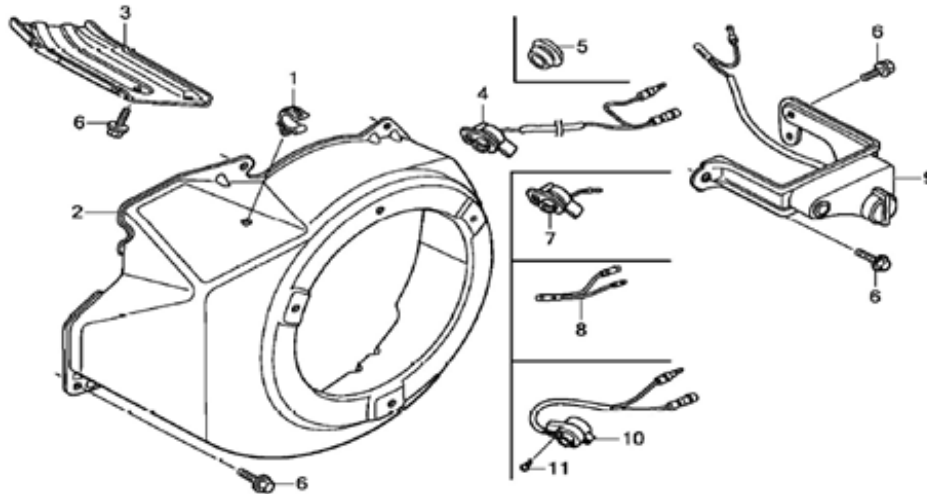
REF #	PART #	QTY.	DESCRIPTION
1	036037-00079	1	GASKET, CASE COVER
2	036037-00080	1	COVER ASSY., CRANKCASE
3	036037-00081	1	CAP ASSY., OIL FILLER
4	036037-00082	1	CAP ASSY., OIL FILLER
5	036037-00083	2	GASKET, OIL FILLER CAP
6	036037-00084	1	GOVERNOR ASSY. (BALANCER)
7	036037-00085	2	WEIGHT, GOVERNOR
8	036037-00086	1	HOLDER, GOVERNOR WEIGHT
9	036037-00087	2	PIN, GOVERNOR WEIGHT
10	036037-00088	1	SLIDER, GOVERNOR
11	036037-00089	1	CLIP, GOVERNOR HOLDER
12	036037-00090	2	PIN, DOWEL (8X12)
13	036037-00091	1	OIL SEAL (30X46X8)
14	036037-00092	1	WASHER, PLAIN (6MM)
15	036037-00093	7	BOLT, FLANGE (8X35)
16	036037-00094	1	BEARING, RADIAL BALL
17	036037-00095	1	BEARING, RADIAL BALL



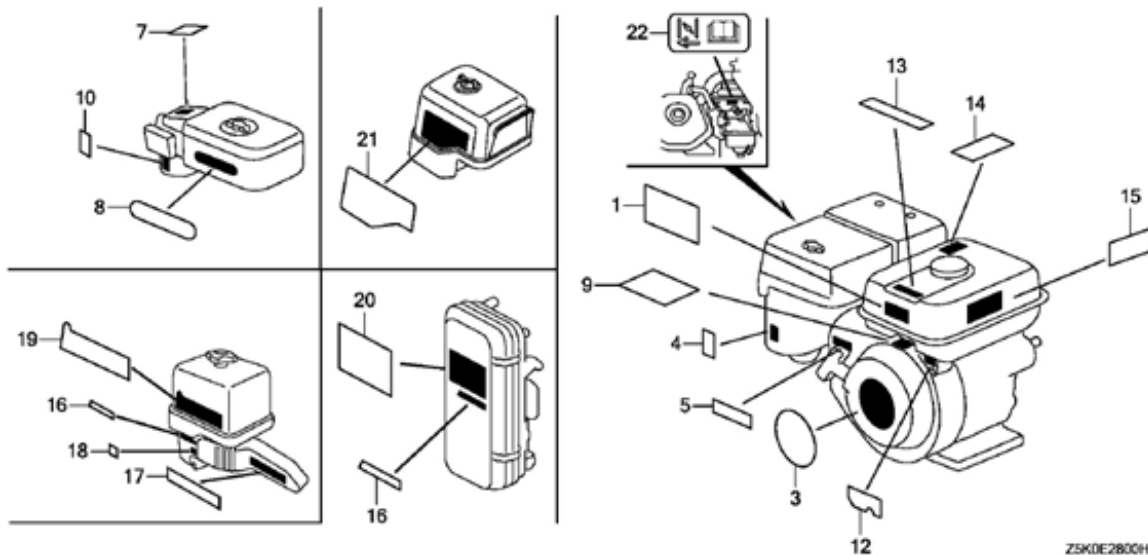
REF #	PART #	QTY.	DESCRIPTION
1	036037-00099	1	CYLINDER ASSY.
3	036037-00100	1	SHAFT, GOVERNOR ARM
6	036037-00101	2	BOLT, DRAIN PLUG
7	036037-00102	1	WASHER
8	036037-00103	1	OIL SEAL
9	036037-00104	1	O-RING
9	036037-00105	1	O-RING
10	036037-00106	1	NUT, FLANGE
11	036037-00107	2	WASHER, DRAIN PLUG
12	036037-00108	1	PIN, LOCK
13	036037-00109	2	BOLT, FLANGE
14	036037-00110	1	BEARING, RADIAL BALL
16	036037-00111	1	SWITCH ASSY., OIL LEVEL



REF #	PART #	QTY.	DESCRIPTION
1	036037-00112	1	CYLINDER HEAD
2	036037-00113	1	GUIDE, VALVE (OS)
3	036037-00114	1	GUIDE, EX. VALVE (OS)
4	036037-00115	1	CLIP, VALVE GUIDE
5	036037-00116	1	GASKET, CYLINDER HEAD
6	036037-00117	1	COVER, HEAD
7	036037-00118	1	GASKET, CYLINDER HEAD
8	036037-00119	1	BOLT, HEAD COVER
9	036037-00120	2	BOLT, STUD (8X123)
10	036037-00121	1	WASHER, HEAD COVER
11	036037-00122	2	BOLT 2, STUD (8X32)
12	036037-00123	2	PIN A, DOWEL (12X20)
14	036037-00124	4	BOLT, FLANGE (10X80)
15	036037-00125	1	SPARK PLUG
15	036037-00126	1	SPARK PLUG
15	036037-00127	1	SPARK PLUG
17	036037-00128	1	TUBE, BREATHER

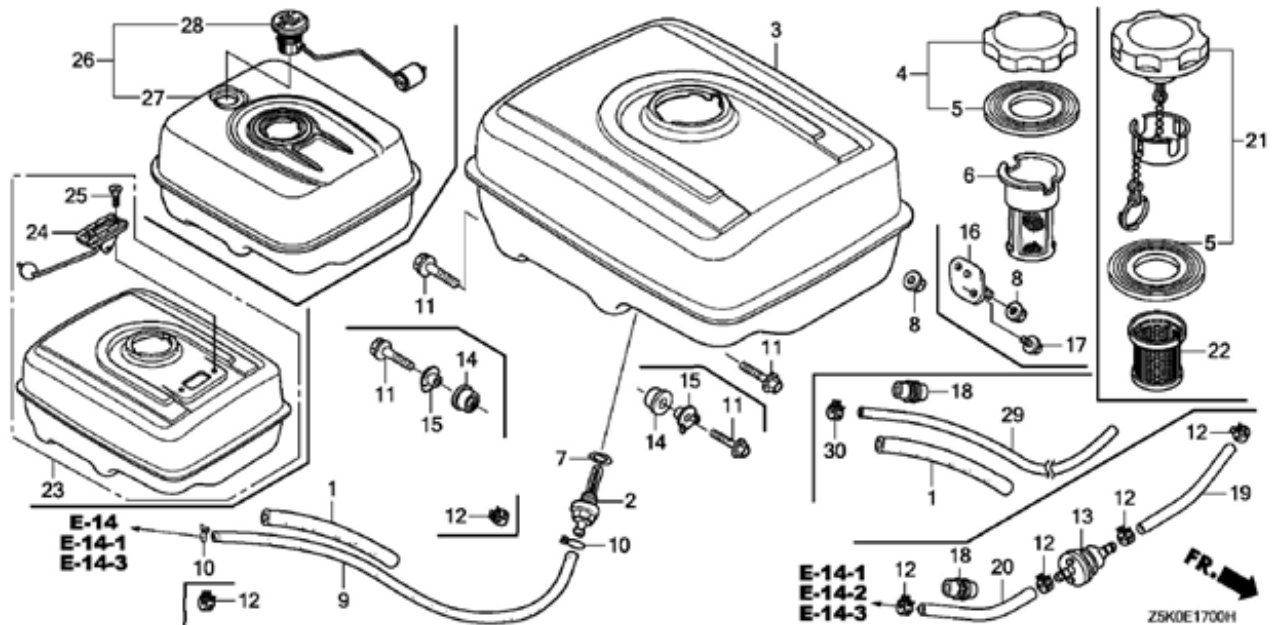


REF #	PART #	QTY.	DESCRIPTION
1	036037-00129	1	CLIP, TUBE
2	036037-00130	1	COVER, FAN *NH1* (BLACK)
2	036037-00131	1	COVER, FAN *R280* (POWER RED)
3	036037-00132	1	SHROUD
6	036037-00133	6	BOLT, FLANGE (6X12)
10	036037-00134	1	SWITCH ASSY., ENGINE STOP
11	036037-00135	2	SCREW, TAPPING (3X6)

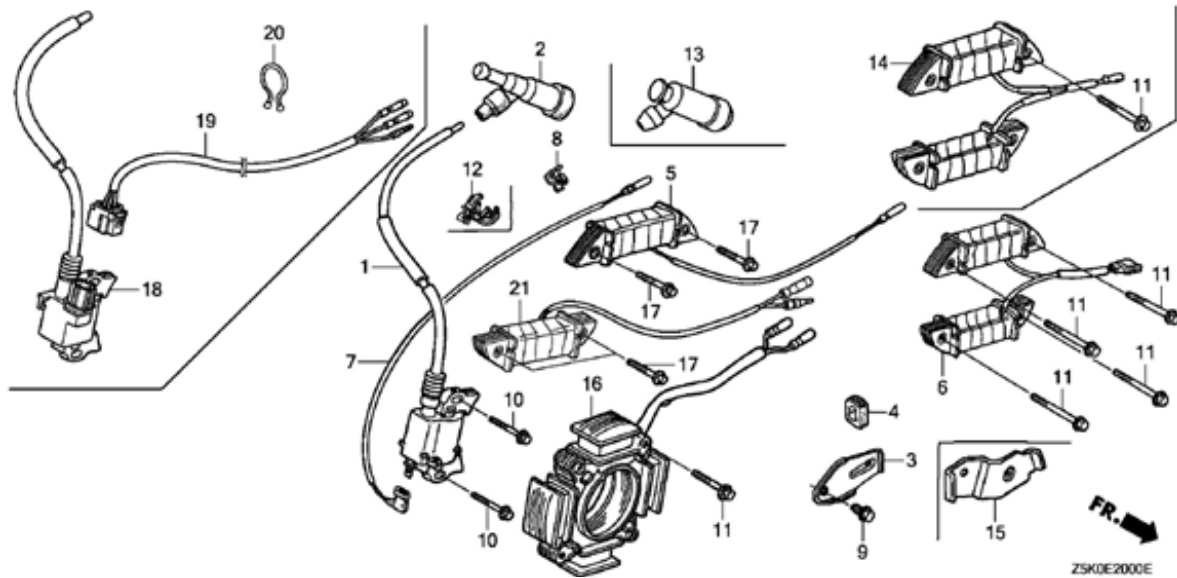


Z5K0E2800H

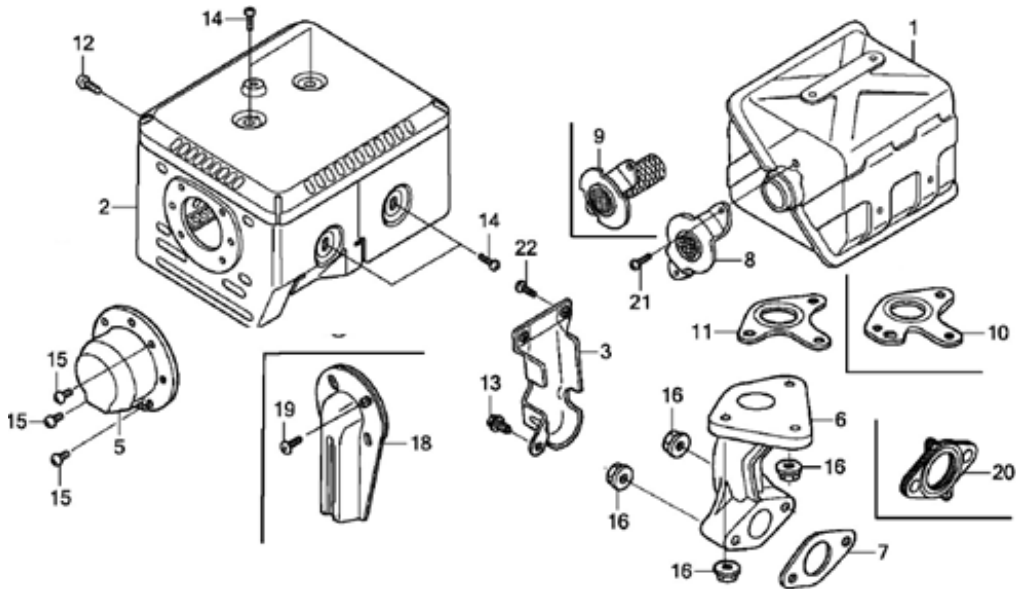
REF #	PART #	QTY.	DESCRIPTION
3	036037-00161	1	EMBLEM (GX270)
4	036037-00162	1	MARK, CHOKE
5	036037-00163	1	MARK, THROTTLE INDICATION
14	036037-00164	1	MARK, EX. CAUTION
15	036037-00165	1	OPERATOR CAUTION



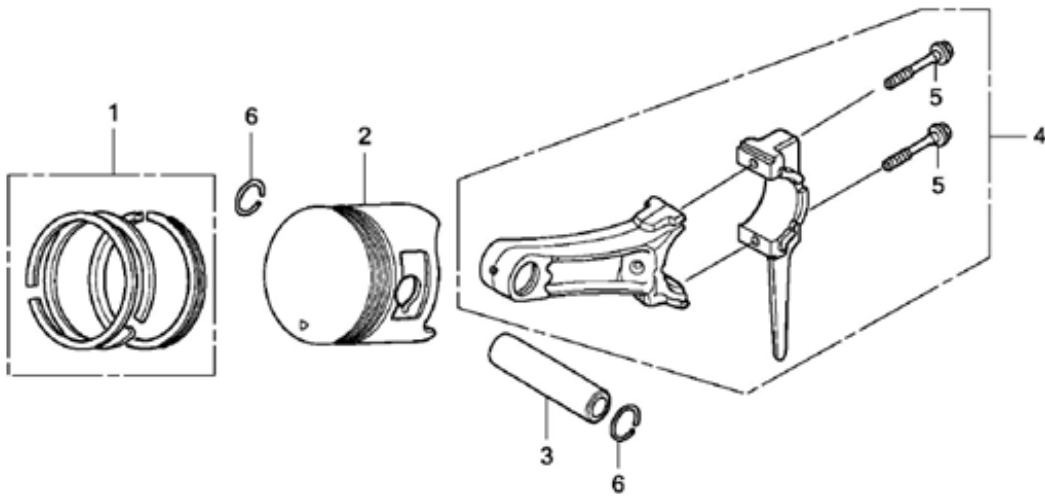
REF #	PART #	QTY.	DESCRIPTION
1	036037-00141	1	SEE PART DETAILS - PRI; RUBBER, SUPPORTER (107M...
2	036037-00142	1	SEE PART DETAILS - PRI; JOINT, FUEL TANK
5	036037-00143	1	GASKET, FUEL FILLER CAP (Honda Code 7346745).
5	036037-00144	1	GASKET, FUEL FILLER CAP (39X62X3) (TOUYOUSYA)
7	036037-00145	1	SEE PART DETAILS - PRI; O-RING (14MM) (ARAI) Use up to E...
7	036037-00146	1	SEE PART DETAILS - SUP; O-RING (14MM) (NOK)
8	036037-00147	2	SEE PART DETAILS - PRI; NUT, FLANGE (8MM) (Honda ...
9	036037-00148	1	TUBE, FUEL (4.5X210) (FKM)
11	036037-00149	2	SEE PART DETAILS - PRI; BOLT, FLANGE (8X25) (Honda C...
12	036037-00150	2	SEE PART DETAILS - PRI; CLIP, TUBE (D8) (Honda Code 06...
21	036037-00151	1	SEE PART DETAILS - PRI; CAP, FUEL FILLER
22	036037-00152	1	FILTER, FUEL (FROM 1204807)
27	036037-00153	1	TANK, FUEL *NH1* (BLACK)
27	036037-00154	1	TANK, FUEL *NH31* (MCKINLEY WHITE)



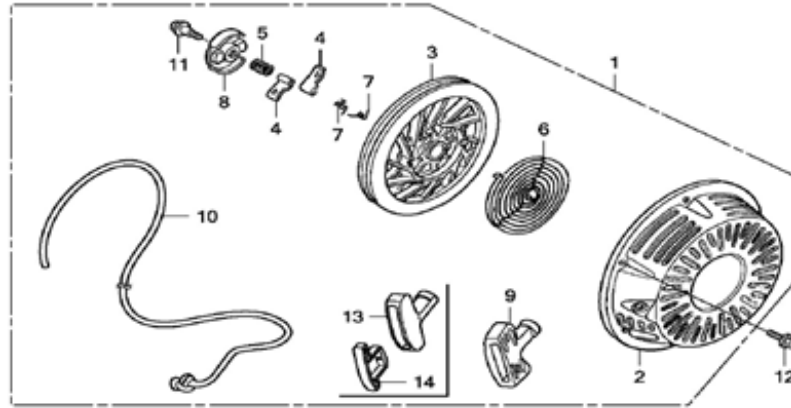
REF #	PART #	QTY.	DESCRIPTION
2	036037-00155	1	CAP ASSY., NOISE SUPPRESSOR
4	036037-00156	1	GROMMET, WIRE
10	036037-00157	2	BOLT, FLANGE (Use up to Engine SN 1530314)
12	036037-00158	1	CLIP, WIRE HARNESS
18	036037-00159	1	COIL ASSY., IGNITION
19	036037-00160	1	WIRE HARNESS ASSY., ENGINE



REF #	PART #	QTY.	DESCRIPTION
1	036037-00166	1	MUFFLER
2	036037-00167	1	PROTECTOR, MUFFLER
3	036037-00168	1	PROTECTOR, EX. PIPE
5	036037-00169	1	CAP, MUFFLER
6	036037-00170	1	PIPE, EX.
7	036037-00171	1	GASKET, EX. PIPE
9	036037-00172	1	ARRESTER, SPARK
10	036037-00173	1	GASKET, MUFFLER
10	036037-00174	1	GASKET, MUFFLER
12	036037-00175	1	SCREW, TAPPING
13	036037-00176	1	BOLT, FLANGE
14	036037-00177	4	SCREW, TAPPING
15	036037-00178	3	SCREW, TAPPING
16	036037-00179	5	NUT, FLANGE
21	036037-00180	2	SCREW, TAPPING
22	036037-00181	2	SCREW, TAPPING



REF #	PART #	QTY.	DESCRIPTION
1	036037-00182	1	RING SET, PISTON (STD)
1	036037-00183	1	RING SET, PISTON (0.25)
1	036037-00184	1	RING SET, PISTON (0.50)
1	036037-00185	1	RING SET, PISTON (0.75)
2	036037-00186	1	PISTON (STD)
2	036037-00187	1	PISTON (0.25)
2	036037-00188	1	PISTON (0.50)
2	036037-00189	1	PISTON (0.75)
3	036037-00190	1	PIN, PISTON
4	036037-00191	1	ROD ASSY., CONNECTING (0.25 LOWER SIZE)
4	036037-00192	1	ROD ASSY., CONNECTING (STD)
5	036037-00193	2	BOLT, CONNECTING ROD
6	036037-00194	2	CLIP, PISTON PIN



REF #	PART #	QTY.	DESCRIPTION
1	036037-00194	1	STARTER ASSY., RECOIL
1	036037-00195	1	STARTER ASSY., RECOIL (BLACK)
2	036037-00196	1	CASE, RECOIL STARTER (BLACK)
2	036037-00197	1	CASE, RECOIL STARTER
3	036037-00198	1	PULLEY, RECOIL STARTER
4	036037-00199	2	RATCHET, STARTER
5	036037-00200	1	SPRING, FRICTION
6	036037-00201	1	SPRING, STARTER RETURN
7	036037-00202	2	SPRING, RATCHET
8	036037-00203	1	RETAINER, SPRING
10	036037-00204	1	ROPE, RECOIL STARTER
11	036037-00205	1	SCREW, CENTER
12	036037-00206	3	BOLT, FLANGE
13	036037-00207	1	GRIP, STARTER
14	036037-00208	1	GRIP, REINFORCEMENT

LIMITED WARRANTY, DISCLAIMER AND REMEDIES

Supplier warrants to Customer that the Services shall be provided in a workmanlike manner and that the Goods shall be free from defects in material and workmanship at the date of shipment from Supplier's facility. This warranty shall not run to any person other than Customer.

All claims under this warranty must be made in writing and delivered to Supplier prior to the expiration of one (1) year after the Goods have been delivered (or, if applicable, within one (1) year after the Services have been performed) or be forever barred. Supplier will repair or replace Goods or parts recognized and acknowledged by Supplier as being defective at the time of delivery without charge. However, Supplier will bill Customer for Goods and/or Services not covered by the warranty, including travel expenses incurred while performing warranty service calls. EQUIPMENT, COMPONENTS OR OTHER GOODS FURNISHED THAT ARE NOT MANUFACTURED BY SUPPLIER ARE ONLY COVERED TO THE EXTENT OF THE ORIGINAL MANUFACTURER'S WARRANTY, WHICH MAY VARY FROM THE ABOVE. Further, the above warranty shall not apply to any hardware or software that has been repaired or altered without Supplier's written permission by anyone other than Supplier's personnel. The foregoing states the sole and exclusive remedy for any breach of warranty or for any other claim based on any defect in, or nonperformance of, the Goods or Services, whether based upon contract, warranty, negligence, tort (including strict liability) or otherwise.

NO EXPRESS WARRANTIES AND NO IMPLIED WARRANTIES, WHETHER OF MERCHANTABILITY OR FITNESS FOR ANY PARTICULAR PURPOSE OR WEAR CAPACITY, OR OTHERWISE, SHALL APPLY TO THE GOODS AND SERVICES. SUPPLIER SPECIFICALLY DISCLAIMS AND EXCLUDES ALL OTHER EXPRESS AND IMPLIED WARRANTIES. NO WAIVER, ALTERATION, ADDITION OR MODIFICATION OF THE FOREGOING SHALL BE VALID UNLESS MADE IN WRITING AND SIGNED BY AN EXECUTIVE OFFICER OF SUPPLIER. IN NO EVENT WILL SUPPLIER BE LIABLE FOR ANY INCIDENTAL OR CONSEQUENTIAL DAMAGES.

WHAT IS NOT COVERED

This Limited Warranty does not cover any damage, deterioration or malfunction resulting from normal wear or tear, or any alteration, modification, improper or unreasonable use or maintenance, misuse, abuse, accident, neglect, exposure to excess moisture, fire, improper packing and shipping (such claims must be presented to the carrier), lightning, power surges, or other acts of nature. This Limited Warranty does not cover any damage, deterioration or malfunction resulting from the installation or removal of this product from any installation, any unauthorized tampering with this product, any repairs attempted by anyone unauthorized by Minnich to make such repairs, or any other cause which does not relate directly to a defect in materials and/or workmanship of this product.

WHAT IS COVERED

This limited warranty ("Limited Warranty") covers manufacturing defects in materials and workmanship of a product.

WHO IS COVERED:

Only the original purchaser of this product is covered under this Limited Warranty. This Limited Warranty is not transferable to subsequent purchasers or owners of this product. The product must have been purchased directly from Minnich or from an authorized Minnich reseller.

ORDER VIA INTERNET!



Order Online:
<https://www.minnich-mfg.com/login>



- View parts
- Order Parts
- Print specific information
- If you don't have a login give us a call.

ORDER VIA PHONE!



Contact us at:
419-903-0010

WE ACCEPT THE FOLLOWING CARDS!



SCAN FOR HELPFUL VIDEOS!



NON-DEALER AND INTERNATIONAL CUSTOMERS:

Contact Minnich Manufacturing through the following number to locate a dealer near you.
(419-903-0010)

NOTICE

All orders are treated as Standard Orders and will ship the same day if received prior to 3PM EST